

Electromechanical modeling of human ventricles with ischemic cardiomyopathy: numerical simulations in sinus rhythm and under arrhythmia

Matteo Salvador^{a,*}, Marco Fedele^a, Pasquale Claudio Africa^a, Eric Sung^c, Luca Dede^a, Adityo Prakosa^c, Jonathan Chrispin^d, Natalia Trayanova^c, Alfio Quarteroni^{a,b}

^a MOX-Dipartimento di Matematica, Politecnico di Milano, Milan, Italy

^b École Polytechnique Fédérale de Lausanne, Lausanne, Switzerland

^c Department of Biomedical Engineering, Johns Hopkins University, Baltimore, MD, USA

^d Department of Medicine, Johns Hopkins Hospital, Baltimore, MD, USA

ARTICLE INFO

Keywords:

Electromechanical modeling
Numerical simulations
Left ventricle
Ischemic cardiomyopathy
Ventricular tachycardia

ABSTRACT

We developed a novel patient-specific computational model for the numerical simulation of ventricular electromechanics in patients with ischemic cardiomyopathy (ICM). This model reproduces the activity both in sinus rhythm (SR) and in ventricular tachycardia (VT). The presence of scars, grey zones and non-remodeled regions of the myocardium is accounted for by the introduction of a spatially heterogeneous coefficient in the 3D electromechanics model. This 3D electromechanics model is firstly coupled with a 2-element Windkessel afterload model to fit the pressure-volume (PV) loop of a patient-specific left ventricle (LV) with ICM in SR. Then, we employ the coupling with a 0D closed-loop circulation model to analyze a VT circuit over multiple heartbeats on the same LV. We highlight similarities and differences on the solutions obtained by the electrophysiology model and those of the electromechanics model, while considering different scenarios for the circulatory system. We observe that very different parametrizations of the circulation model induce the same hemodynamical considerations for the patient at hand. Specifically, we classify this VT as unstable. We conclude by stressing the importance of combining electrophysiological, mechanical and hemodynamical models to provide relevant clinical indicators in how arrhythmias evolve and can potentially lead to sudden cardiac death.

1. Introduction

Ventricular tachycardia (VT) is a life-threatening arrhythmia that predisposes patients to sudden cardiac death (SCD). Clinically, patients with greater ventricular dysfunction are more likely to develop severe VTs. Even though left ventricular ejection fraction (LVEF) poorly reflects the mechanical aspect of arrhythmias, LVEF < 35% has been used as the main metric to determine the level of SCD risk in the clinics [20]. Prior work suggests that this greater arrhythmia risk could be due to abnormal electromechanical feedback, which results in greater electrical instability and arrhythmogenic propensity [60]. The cardiac mechano-electric coupling presents proarrhythmic effects in pathological scenarios and might induce extra stimuli, early afterdepolarizations or delayed afterdepolarizations [34,62]. However, it is unknown from a clinical perspective how the electromechanical feedback effects

manifest during VT, and it is difficult to dissect its mechanisms in a clinical study.

Multiscale, computational heart models incorporating information from the cellular to whole-organ levels are well-suited to dissect fundamental mechanisms of arrhythmogenesis. Biophysically-detailed models of cardiac electrophysiology are well-established and have been utilized widely in the simulation of VTs in both experimental and clinical contexts [6,45]. Numerical simulations circumvent experimental and clinical limitations by giving the possibility to test different hypotheses and gain insights on the electromechanical function [27]. However, very few studies have been able to create models that synthesize both electrical and mechanical activities into a cohesive framework [8,41]. Furthermore, a missing component in the electromechanical studies is the representation of tachycardias and the effect of heart contraction in the re-entrant circuits that underlie

* Corresponding author.

E-mail address: matteo1.salvador@polimi.it (M. Salvador).

<https://doi.org/10.1016/j.combiomed.2021.104674>

Received 4 June 2021; Received in revised form 15 July 2021; Accepted 19 July 2021

Available online 24 July 2021

0010-4825/© 2021 The Author(s).

Published by Elsevier Ltd.

This is an open access article under the CC BY-NC-ND license

(<http://creativecommons.org/licenses/by-nc-nd/4.0/>).

arrhythmias.

The goal of this study is to develop a patient-specific computational model of electromechanical activity in the human ventricles with ischemic cardiomyopathy (ICM) and to use this model to study how mechanical contraction affects VT arrhythmia dynamics. This patient-specific electromechanical model would allow us to provide non-invasive, personalized assessments of VT circuits and the corresponding hemodynamical consequences. Electromechanical simulations provide a more accurate knowledge and additional information on VTs with respect to electrophysiological ones. Moreover, their outcomes differ in terms of action potential propagation and conduction velocity once the VT is triggered. We are also able to identify hemodynamically unstable VTs, that generally require cardioversion, by exploiting the coupling with a closed-loop circulation model [49,50].

2. Model development

In this section we provide an overview of the different core models involved in the framework of cardiac electromechanics. For more information about the mathematical equations we refer to Refs. [49,50,57].

2.1 Electrophysiology

We model the electrophysiological behavior by means of the monodomain equation, a diffusion-reaction partial differential equation that describes the electric properties of cardiac muscle cells, assuming the same anisotropy ratios between the intracellular and extracellular spaces [44,56]. It is a homogenized continuum model, which means that it is used to capture average properties of many cardiomyocytes, and not the behavior of single cells. We couple it with the ten Tusscher-Panfilov (TTP06) ionic model, due to our focus on the human left ventricle (LV) [61]. This model permits to describe the microscopic details of the single cardiomyocyte in an accurate and detailed manner [16].

The electrophysiology model reads:

$$\left\{ \begin{array}{ll} \chi_m \left[C_m \frac{\partial u}{\partial t} + \mathcal{I}_{ion}(u, \mathbf{w}, \mathbf{z}) \right] = \nabla \cdot (J\mathbf{F}^{-1} \mathbf{D}_M \mathbf{F}^{-T} \nabla u) + \mathcal{I}_{app}(t) & \text{in } \Omega_0 \times (0, T), \\ \frac{\partial \mathbf{w}}{\partial t} - \mathbf{H}(u, \mathbf{w}) = \mathbf{0} & \text{in } \Omega_0 \times (0, T), \\ \frac{\partial \mathbf{z}}{\partial t} - \mathbf{G}(u, \mathbf{w}, \mathbf{z}) = \mathbf{0} & \text{in } \Omega_0 \times (0, T), \\ (J\mathbf{F}^{-1} \mathbf{D}_M \mathbf{F}^{-T} \nabla u) \cdot \mathbf{N} = 0 & \text{on } \partial\Omega_0 \times (0, T), \\ u = u_0, \mathbf{w} = \mathbf{w}_0, \mathbf{z} = \mathbf{z}_0 & \text{in } \Omega_0 \times \{0\}. \end{array} \right. \quad (1)$$

$\Omega_0 \subset \mathbb{R}^3$ is the computational domain in the reference configuration [49,50]: in our application, it is represented by a stress-free patient-specific LV with ICM. $T > 0$ is the final time. C_m is the total membrane capacitance and χ_m is the area of cell membrane per tissue volume. u is the dimensionless transmembrane potential, vector $\mathbf{w} = \{w_1, w_2, \dots, w_k\}$ expresses k recovery (or gating) variables, which play the role of probability density functions and model the fraction of open ionic channels across the membrane of a single cell, and vector $\mathbf{z} = \{z_1, z_2, \dots, z_m\}$ defines m concentration variables of specific ionic species (such as calcium Ca^{2+} , which plays a major role in heart contraction and mechanical activation). $\mathcal{I}_{app}(t)$ is an external applied current, which simulate in our case the behavior of the Purkinje network [36,51]. Indeed we use it to trigger the action potential in specific points of the myocardium. $\mathcal{I}_{ion}(u, \mathbf{w}, \mathbf{z})$ is the feedback from the cellular scale into the tissue one, and strictly depends on the chosen ionic model. A Neumann boundary condition is applied all over the boundary and defines the condition of electrically isolated domain. $\mathbf{H}(u, \mathbf{w})$ and $\mathbf{G}(u, \mathbf{w}, \mathbf{z})$ keep into account the specific features of the TTP06 ionic model [61]. $\mathbf{D}_M = \eta \sigma_l \mathbf{I} + \eta(\sigma_l - \sigma_t) \mathbf{f}_0 \otimes \mathbf{f}_0 + \eta(\sigma_n - \sigma_t) \mathbf{n}_0 \otimes \mathbf{n}_0$ refers to the diffusion tensor, being \mathbf{f}_0 the

vector field expressing the fibers direction, \mathbf{n}_0 the vector field that indicates the crossfibers direction, and $\sigma_l, \sigma_t, \sigma_n \in \mathbb{R}^+$ the longitudinal, transversal and normal conductivities, respectively [55]. The parameter $\eta = \eta(\mathbf{x})$ takes into account the effect of ischemic regions both at the macroscopic scale and at the microscopic one. With respect to the latter point, $G_{Na}(\mathbf{x})$, $G_{CaL}(\mathbf{x})$, $G_{kr}(\mathbf{x})$ and $G_{ks}(\mathbf{x})$ conductances of the TTP06 ionic model [61] vary in space according to the following laws:

$$G_{Na}(\mathbf{x}) = \left[0.38 + \frac{10}{9} (\eta(\mathbf{x}) - 0.1)(1 - 0.38) \right] G_{Na},$$

$$G_{CaL}(\mathbf{x}) = \left[0.31 + \frac{10}{9} (\eta(\mathbf{x}) - 0.1)(1 - 0.31) \right] G_{CaL},$$

$$G_{kr}(\mathbf{x}) = \left[0.30 + \frac{10}{9} (\eta(\mathbf{x}) - 0.1)(1 - 0.30) \right] G_{kr},$$

$$G_{ks}(\mathbf{x}) = \left[0.20 + \frac{10}{9} (\eta(\mathbf{x}) - 0.1)(1 - 0.20) \right] G_{ks},$$

where G_{Na} , G_{CaL} , G_{kr} and G_{ks} are defined as in Ref. [61]. We can potentially consider a continuum of grey zones using linear interpolation, for $\eta(\mathbf{x}) \in [0.1, 1]$, going from the full healthy case ($\eta(\mathbf{x}) = 1$) to the grey zone described in Ref. [6] ($\eta(\mathbf{x}) = 0.1$). We focus on the modeling of a single possible grey zone, *i.e.* the one reported in Ref. [6], where G_{Na} , G_{CaL} , G_{kr} and G_{ks} conductances are reduced to 38%, 31%, 30% and 20% of their physiological values, respectively. This leads to a reduced upstroke and a longer plateau of the action potential. We finally model scars as myocardial regions where no evolution of both the transmembrane potential and all ionic variables occur, where therefore Eq. (1) is not actually solved. We report in Fig. 1 the evolution over time of the transmembrane potential u and the intracellular calcium concentration Ca^{2+} for different values of the parameter η .

By defining \mathbf{X} and \mathbf{x} as the reference and deformed coordinates respectively, we introduce the deformation tensor $\mathbf{F} = \mathbf{I} + \frac{\partial \mathbf{d}}{\partial \mathbf{X}}$ (with $J = \det(\mathbf{F}) > 0$). Indeed, in the formulation of our model, we consider the so called mechano-electric feedback (MEF), which models the effect of mechanical deformation \mathbf{F} on cardiac electrophysiology [63]. MEF can be classified in two different categories [15]. There are both geometrical and physiological contributions. The latter category coincides with stretch-activated channels (SACs) and mechanical modulation of cellular Ca^{2+} handling. In this work, as it can be seen from Eq. (1), we focus on the geometrical part only.

2.2 Mechanical activation

Mechanical activation bridges electrophysiology and passive mechanics. There are two approaches available in literature, the active stress [35,48] and active strain [3,4] models. With the former approach, the underlying hypothesis is that an active force is generated by the myocardium, whereas in the latter an active deformation is prescribed to the cardiac tissue. We propose here modeling of grey zones and scars within the active strain framework [10,52].

We consider a phenomenological law that keeps into account the local shortening of the fibers γ_f at the macroscopic level [9,23,52,53]. Myocardial displacement \mathbf{d} and concentration of intracellular calcium ions $[Ca^{2+}]_i$ play an important role in the time evolution of γ_f .

The phenomenological law reads:

$$\left\{ \begin{array}{ll} \frac{\partial \gamma_f}{\partial t} - \eta \frac{\epsilon}{g([Ca^{2+}]_i)} \Delta \gamma_f = \eta \frac{1}{g([Ca^{2+}]_i)} \Phi([Ca^{2+}]_i, \gamma_f, \mathbf{d}) & \text{in } \Omega_0 \times (0, T), \\ \nabla \gamma_f \cdot \mathbf{N} = 0 & \text{on } \partial\Omega_0 \times (0, T), \\ \gamma_f = \gamma_{f,0} & \text{in } \Omega_0 \times \{0\}, \end{array} \right. \quad (2)$$

where $g([Ca^{2+}]_i) = \mu_A([Ca^{2+}]_i)^2$, $\Phi([Ca^{2+}]_i, \gamma_f, \mathbf{d}) = \alpha H_{[Ca^{2+}]_{i,0}}([Ca^{2+}]_i)$

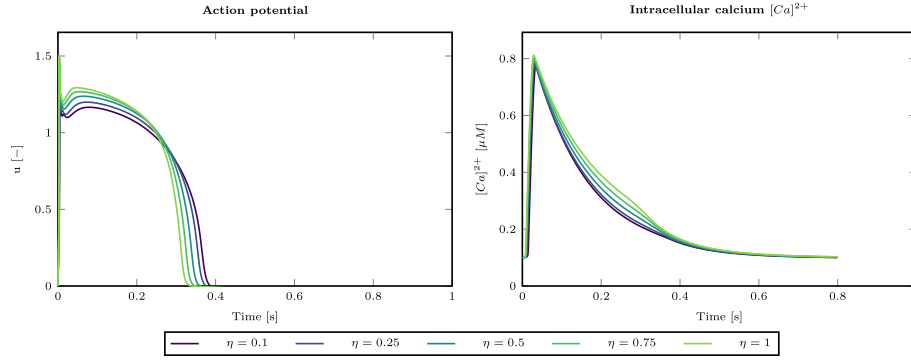


Fig. 1. Action potential (left) and intracellular calcium concentration $[Ca]^{2+}$ (right) for different values of $\eta = \eta(\mathbf{x})$ (TTP06 model, epicardium). $\eta = 1$ corresponds to healthy tissue, whereas $\eta \in \{0.1, 0.25, 0.5, 0.75\}$ defines different grey zones.

$$([Ca^{2+}]_i - [Ca^{2+}]_{i,0})^2 R_{FL}(\mathcal{I}_{4f}) + \sum_{j=1}^5 (-1)^j (j+1)(j+2) \mathcal{I}_{4f}^j \gamma_f^j$$

is the active force and $R_{FL}(\mathcal{I}_{4f})$ is a truncated Fourier series expressing the sarcomere force-length relationship [24]. Both α and μ_A should be calibrated according to the specific case under investigation. The active deformation is computed by exploiting the following orthotropic form [4]:

$$\mathbf{F}_A = \mathbf{I} + \gamma_f \mathbf{f}_0 \otimes \mathbf{f}_0 + \gamma_s \mathbf{s}_0 \otimes \mathbf{s}_0 + \gamma_n \mathbf{n}_0 \otimes \mathbf{n}_0, \quad (3)$$

where \mathbf{s}_0 and \mathbf{n}_0 represent sheets and their normal direction respectively, with γ_s and γ_n corresponding to local shortening or elongation [10,40]:

$$\gamma_n = k \left(k_{\text{endo}} \frac{\lambda - \lambda_{\text{epi}}}{\lambda_{\text{endo}} - \lambda_{\text{epi}}} + k_{\text{epi}} \frac{\lambda - \lambda_{\text{endo}}}{\lambda_{\text{epi}} - \lambda_{\text{endo}}} \right) \left(\frac{1}{\sqrt{1 + \gamma_f}} - 1 \right), \quad (4)$$

$\eta(\mathbf{x}) = 1$. The reduced value of $\eta(\mathbf{x})$ for grey zones induces slower activation and deactivation with respect to the healthy case. Moreover, $\eta(\mathbf{x}) = 0.1$ prescribes a lower peak value of γ_f during the cardiac cycle. These outcomes are obtained by reducing the effects of the diffusion term and the forcing term in Eq. (2) respectively.

2. 3 Active and passive mechanics

We use a nearly-incompressible formulation by weakly penalizing large volumetric variations to define the evolution of the displacement in the myocardium [58]. We model the properties of the cardiac tissue by means of fibers \mathbf{f}_0 , sheets \mathbf{s}_0 and their normals \mathbf{n}_0 , which permit to obtain highly anisotropic internal stresses associated with a prescribed deformation [26].

The momentum conservation equation with boundary and initial conditions reads [49,50]:

$$\begin{cases} \rho_s \frac{\partial^2 \mathbf{d}}{\partial t^2} - \nabla \cdot \mathbf{P}(\mathbf{d}, \gamma_f) = \mathbf{0} & \text{in } \Omega_0 \times (0, T), \\ (\mathbf{N} \otimes \mathbf{N}) \left(K_{\perp}^{\text{epi}} \mathbf{d} + C_{\perp}^{\text{epi}} \frac{\partial \mathbf{d}}{\partial t} \right) + (\mathbf{I} - \mathbf{N} \otimes \mathbf{N}) \left(K_{\parallel}^{\text{epi}} \mathbf{d} + C_{\parallel}^{\text{epi}} \frac{\partial \mathbf{d}}{\partial t} \right) + \mathbf{P}(\mathbf{d}, \gamma_f) \mathbf{N} = \mathbf{0} & \text{on } \Gamma_0^{\text{epi}} \times (0, T), \\ \mathbf{P}(\mathbf{d}, \gamma_f) \mathbf{N} = \frac{|\mathbf{JF}^{-T} \mathbf{N}|}{\int_{\Gamma_0^{\text{base}}} |\mathbf{JF}^{-T} \mathbf{N}| d\Gamma_0} \int_{\Gamma_0^{\text{base}}} p_{LV}(t) \mathbf{JF}^{-T} \mathbf{N} d\Gamma_0 & \text{on } \Gamma_0^{\text{base}} \times (0, T), \\ \mathbf{P}(\mathbf{d}, \gamma_f) \mathbf{N} = -p_{LV}(t) \mathbf{JF}^{-T} \mathbf{N} & \text{on } \Gamma_0^{\text{endo}} \times (0, T), \\ \mathbf{d} = \mathbf{d}_0, \quad \frac{\partial \mathbf{d}}{\partial t} = \dot{\mathbf{d}}_0 & \text{in } \Omega_0 \times \{0\}. \end{cases} \quad (6)$$

$$\gamma_s = \frac{1}{(1 + \gamma_f)(1 + \gamma_n)} - 1. \quad (5)$$

Here λ represents a transmural coordinate, varying from λ_{endo} at the endocardium to λ_{epi} at the epicardium, which permits to have a transversely non-homogeneous thickening of the left ventricular wall. γ_s set like (5) yield to $\det(\mathbf{F}_A) = 1$. Coefficient $\eta = \eta(\mathbf{x})$ keeps into account mathematical modeling of healthy tissue and a continuum of grey zones, according to its value. As described above, we will consider one single grey zone ($\eta(\mathbf{x}) = 0.1$), whereas full healthy tissue is modelled using

A Robin boundary condition is prescribed at the epicardium to account for the effect of the pericardial sac, so that the presence of the pericardium is addressed and modelled [42]. $K_{\perp}^{\text{epi}}, K_{\parallel}^{\text{epi}}, C_{\perp}^{\text{epi}}, C_{\parallel}^{\text{epi}} \in \mathbb{R}^+$ are local values of stiffness and viscosity constants of the epicardial tissue in the normal or tangential directions, respectively. At the base of the LV we impose an energy consistent boundary condition that models the effect of the blood flow coming from the left atrium [49,50]. $p_{LV}(t)$ is the internal pressure of the ventricular chamber. The Piola-Kirchhoff strain tensor $\mathbf{P} = \mathbf{P}(\mathbf{d}, \gamma_f)$ incorporates both the passive and active mechanical properties of the tissue. After defining the symmetric positive definite

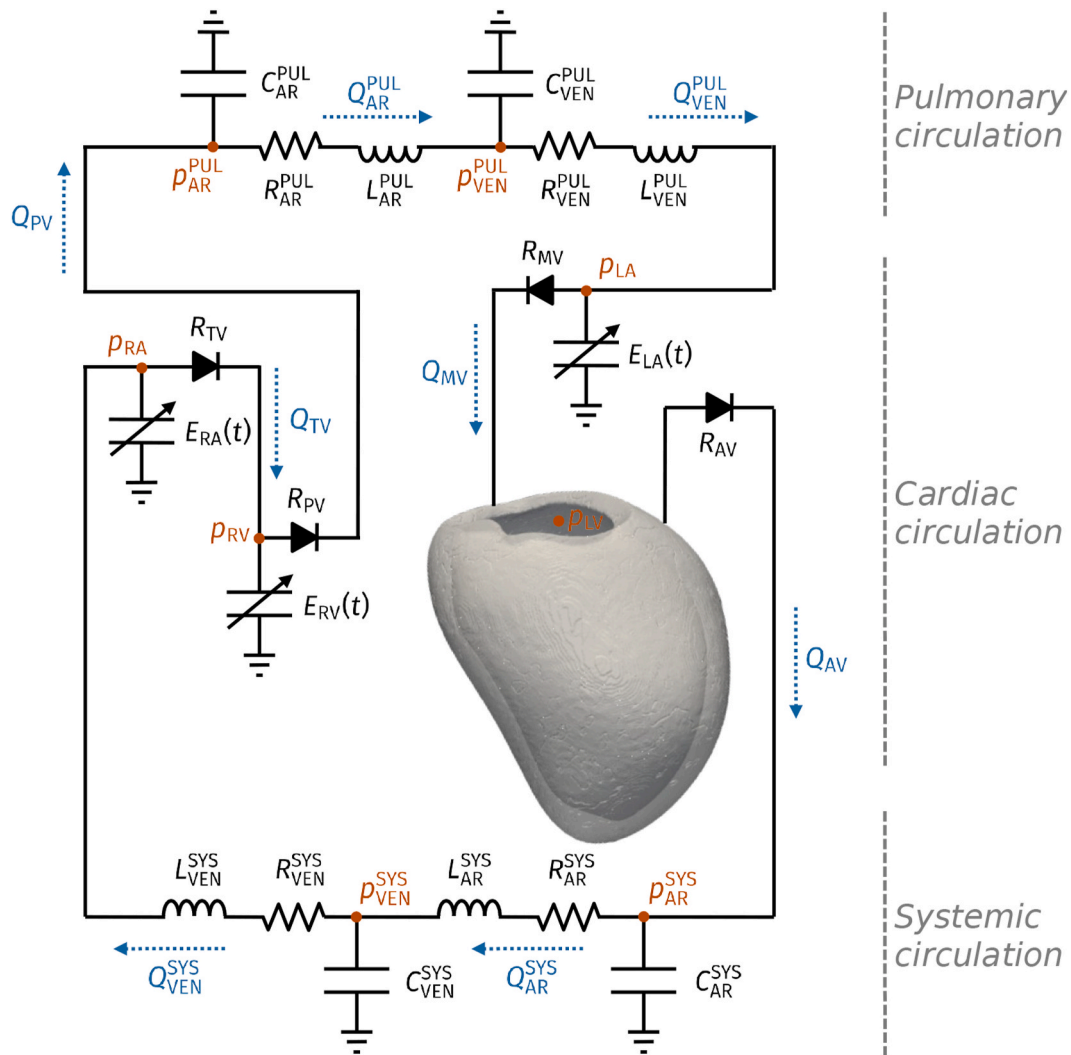


Fig. 2. 3D-0D coupling between the 3D electromechanics model of an LV with ICM and the 0D closed-loop circulation model. The state variables corresponding to pressures and fluxes are depicted in orange and blue, respectively.

right Cauchy-Green tensor $C = F^T F$, being $F = I + \nabla d$ the deformation tensor, the strain energy function \mathcal{W} provides a link between the strain and the energy of the material. Under the hyperelasticity assumption, the strain energy function can be differentiated with respect to the deformation tensor F to obtain P :

$$P(d, \gamma_f) = \frac{\partial \mathcal{W}(C)}{\partial F}. \quad (7)$$

In the active strain framework, in addition to the reference configuration Ω_0 and the deformed one Ω , we introduce an intermediate state $\hat{\Omega}$, which represents the active part of the deformation [3,4,39,52]. The 2nd order tensor F_A maps Ω_0 into $\hat{\Omega}$, whereas the F_E tensor transforms $\hat{\Omega}$ into Ω . We finally reach the multiplicative decomposition of $F = F_E F_A$. The first Piola-Kirchhoff strain tensor P reads:

$$P = \det(F_A) P_E F_A^{-T}, \quad P_E = \frac{\partial \mathcal{W}(C_E, J)}{\partial F_E}. \quad (8)$$

For additional details on the final form of tensor P in the active strain framework, we refer the reader to Ref. [23].

Several models are available in literature to describe the anisotropic nature of the tissue, such as the Guccione [25] or the Holzapfel-Ogden laws [30]. Thanks to its lower computational cost and the limited number of parameters that makes the calibration phase straightforward, the Guccione constitutive law is nowadays more used in the context of patient-specific electromechanical modeling [22,59]. The strain energy function of this model reads [25,26]:

$$\mathcal{W}(C) = \frac{\bar{C}}{2} (e^\varrho - 1) \quad (9)$$

$$Q = b_{tf} E_{tf}^2 + b_{ss} E_{ss}^2 + b_{nn} E_{nn}^2 + b_{ts} (E_{ts}^2 + E_{sf}^2) + b_{fn} (E_{fn}^2 + E_{nf}^2) + b_{sn} (E_{sn}^2 + E_{ns}^2)$$

$E_{ab} = \mathbf{E}\mathbf{a}_0 \cdot \mathbf{b}_0$ for $a, b \in \{f, s, n\}$ are the entries of $\mathbf{E} = \frac{1}{2}(\mathbf{C} - \mathbf{I})$, i.e the Green-Lagrange strain energy tensor. \mathbf{C} is defined as follows:

$$\mathbf{C} = C[\eta + (1 - \eta)4.56] \quad \eta \in [0, 1], \quad (10)$$

being C a coefficient fitted from experiments [26].

We assign $\eta = 1$ to healthy tissue, $\eta = 0.1$ corresponds to the single type of grey zone that we consider in this work (as in electrophysiology and activation), and $\eta = 0$ models scar regions. In this way, we model a stiffer myocardium for infarcted areas. We introduce a convex term $\mathcal{W}_{vol}(J) = \frac{B}{2}(J - 1)\log(J)$ into the energy function \mathcal{W} , such that $J = 1$ is its global minimum. This term sets a nearly-incompressible constraint [14,19,70]. $B \in \mathbb{R}^+$ is the bulk modulus, which has a role in the torsion mechanism of the ventricle and enforces the incompressibility constraint [23].

2. 4 Blood circulation and windkessel afterload model

In [49,50] we present a 0D closed-loop circulation model of the whole cardiovascular system, previously introduced in Refs. [12,29,67]. This model is briefly recalled here below in compact form:

$$\begin{cases} \frac{dc_1(t)}{dt} = \mathbf{D}(t, c_1(t), c_2(t)) & t \in (0, T], \\ c_2(t) = \mathbf{W}(t, c_1(t)) & t \in (0, T], \\ c_1(0) = c_{1,0}, \end{cases} \quad (11)$$

with \mathbf{D} and \mathbf{W} vector functions defined in Refs. [49,50]. Variables $c_1(t)$ and $c_2(t)$ refer to pressures, volumes and fluxes of the different compartments composing the vascular network:

$$\begin{aligned} c_1(t) &= (V_{LA}(t), V_{LV}(t), V_{RA}(t), V_{RV}(t), p_{AR}^{SYS}(t), p_{VEN}^{SYS}(t), p_{AR}^{PUL}(t), p_{VEN}^{PUL}(t), \\ &\quad Q_{AR}^{SYS}(t), Q_{VEN}^{SYS}(t), Q_{AR}^{PUL}(t), Q_{VEN}^{PUL}(t))^T, \\ c_2(t) &= (p_{LV}(t), p_{LA}(t), p_{RV}(t), p_{RA}(t), Q_{MV}(t), Q_{AV}(t), Q_{TV}(t), Q_{PV}(t))^T, \end{aligned}$$

where p_{LA} , p_{RA} , p_{LV} , p_{RV} , V_{LA} , V_{RA} , V_{LV} and V_{RV} are pressures and volumes in left atrium, right atrium, left ventricle and right ventricle, respectively; p_{AR}^{SYS} , Q_{AR}^{SYS} , p_{VEN}^{SYS} , Q_{VEN}^{SYS} , p_{AR}^{PUL} , Q_{AR}^{PUL} , p_{VEN}^{PUL} and Q_{VEN}^{PUL} define pressures and flow rates of the systemic and pulmonary circulation (arterial and venous), respectively; Q_{MV} , Q_{AV} , Q_{TV} and Q_{PV} express the flow rates through mitral, aortic, tricuspid and pulmonary valves, respectively. For the complete mathematical description of the lumped 0D circulation model we refer to Refs. [49,50].

We couple the 3D electromechanics model of the LV with ICM with the 0D circulation model for the remaining part of the cardiovascular system. We solve the mechanical problem (Eq. (6)) with a volumetric

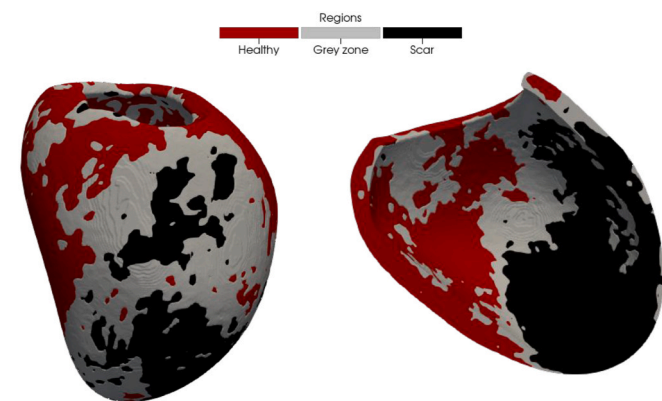


Fig. 3. Patient-specific LV with ICM: distribution of scars (black), grey zones (grey) and non-remodeled regions (red) over the myocardium. Volumetric view (left) and cut view (right).

Table 1

Patient-specific data for an LV with ICM. EF, SV and HR have been retrieved from Cine MRI, while MAP, SBP and DBP were observed by means of a sphygmomanometer.

Parameter	Value
EF	13%
SV	39 mL
HR	57
MAP	80 mmHg
SBP	110 mmHg
DBP	69 mmHg

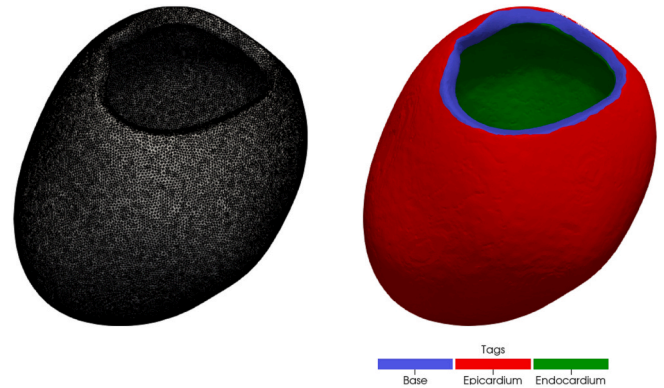


Fig. 4. Initial tetrahedral mesh (left) and distribution of tags over the myocardium (right).

constraint on $V_{LV}(t)$, which is imposed by means of $p_{LV}(t)$. For more information about the 3D-0D coupling strategy we refer to Refs. [49,50]. In Fig. 2 we display the electric analog circuit corresponding to the 0D circulation model, along with the coupling with a 3D electromechanical description of an LV with ICM.

In order to ease parameters tuning and exploit the available clinical data on the LV, for the numerical simulations in sinus rhythm (SR) we use a simplified 0D model, i.e. a 2-element Windkessel afterload model, which defines the evolution in time of variables $p_{LV}(t)$ and $V_{LV}(t)$ only. This model is extensively presented in Refs. [23,57], along with its numerical discretization. For the sake of completeness, we report here below its equation:

$$C \frac{dp_{LV}}{dt} = -\frac{p_{LV}}{R} - \frac{dV_{LV}}{dt}, \quad (12)$$

with $t \in [0, T]$. $C, R > 0$ are two parameters representing the capacitance and the resistance of the electric circuit that mimics the blood flowing in the aorta.

3. Methods

All clinical data were appropriately de-identified and acquired for this retrospective study in accordance with the Johns Hopkins Institutional Review Board. We depict the geometric model of the patient-specific LV in Fig. 3. The distribution of the ischemic regions is mapped from the LGE-MRI. We use the Segment cardiac image analysis software package [28] to segment the Cine MRI of the patient. From this segmentation, we retrieve the volume of the LV blood pool over time, the stroke volume (SV), the ejection fraction (EF) and the heart rate (HR). We also collected some pressure data, namely the mean arterial pressure (MAP), the systolic blood pressure (SBP) and the diastolic blood pressure (DBP), by using a sphygmomanometer before the clinical trial. All these information are reported in Table 1.

The geometry is tetrahedralized by using elements of average edge

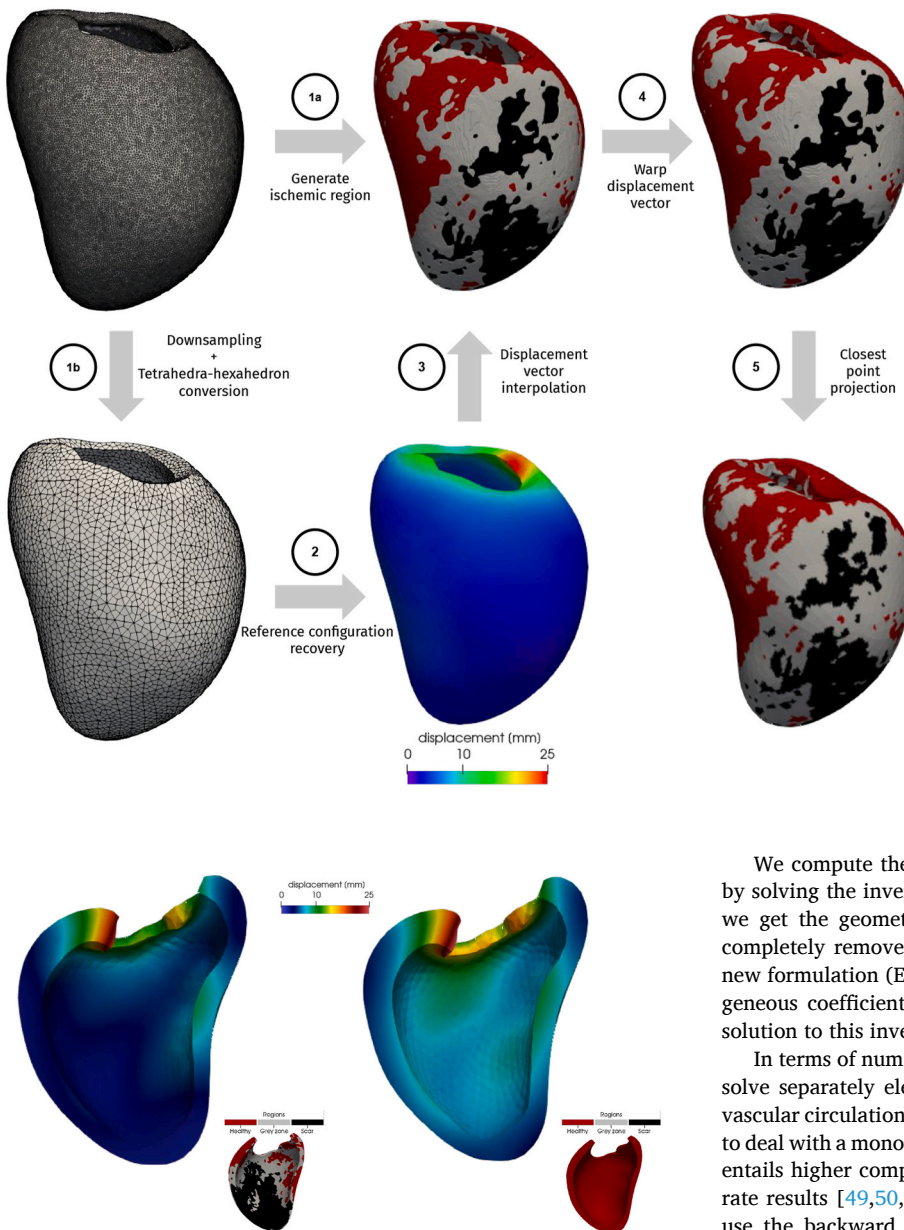


Fig. 5. Preprocessing pipeline for a patient-specific LV with ICM. The ischemic regions are mapped on the high-resolution tetrahedral mesh (step 1a). Then, downsampling and conversion to hexahedral elements are performed (step 1b). We compute the reference configuration on the latter mesh (step 2). The displacement vector is accurately and efficiently interpolated on the high-resolution mesh with the ischemic regions, by using the interpolant proposed in Ref. [50] (step 3). Finally, we warp the tetrahedral mesh with the interpolated reference configuration displacement (step 4) and we perform closest point projection of the ischemic regions distribution on the hexahedral mesh used in our numerical simulations (step 5).

Fig. 6. Reference configuration recovery for a patient-specific LV with ICM. We depict the displacement to reach the unstressed geometry Ω_0 in case the ischemic regions distribution is imported (left) or when fully healthy conditions are considered (right). Scars, which are mostly localized at the apex, prevent the unloading for part of the myocardium.

length equal to 0.35 mm. In Fig. 4 we depict the tetrahedral mesh and the tags for base, epicardium and endocardium. Meshing and ischemic region mapping from imaging are performed with the commercial software Materialise Mimics [1]. The VMTK software – the Vascular Modelling Toolkit [2,5,21] – is used to generate the corresponding hexahedral mesh and to downsample it to the desired resolution employed in our numerical simulations (average element diameter $h_{\text{mean}} = 1.5$ mm, 638'048 elements and 692'535 vertices). We also use VMTK to accurately map the ischemic region distribution from the original high resolution mesh to the downsampled one, after computing the reference configuration, as shown in Fig. 5, by using the technique proposed in Ref. [50].

We use the Bayer-Blake-Plank-Trayanova algorithm [11,43] to generate the fibers distribution (field \mathbf{f}_0) for our geometry, with $\alpha_{\text{epi}} = -60^\circ$, $\alpha_{\text{endo}} = 60^\circ$, $\beta_{\text{epi}} = 20^\circ$ and $\beta_{\text{endo}} = -20^\circ$.

We compute the reference configuration of this patient-specific LV by solving the inverse problem proposed in Refs. [49,50]. In this way, we get the geometry in a stress-free condition, as if the blood was completely removed from the LV. Differently from Refs. [49,50], the new formulation (Eq. (1), (2), (6), (9), (10)) accounting for the heterogeneous coefficient $\eta = \eta(\mathbf{x})$, has a clear influence on the numerical solution to this inverse problem, as shown in Fig. 6.

In terms of numerical discretization, we use a partitioned scheme to solve separately electrophysiology, activation, mechanics and cardiovascular circulation in different blocks. This segregated approach avoids to deal with a monolithic system, which is more memory demanding and entails higher computational costs, while leading to comparably accurate results [49,50,57]. For what concerns the time discretization, we use the backward differentiation formula (BDF) scheme for electrophysiology, activation and mechanics, and an explicit Runge-Kutta scheme for the circulation model. These choices allow to accurately catch the fast time dynamics of the model variables without unbearable restrictions on the time step, while not introducing numerical instabilities. We treat the nonlinear terms coming from both electrophysiology and activation models in a semi-implicit fashion [57]. Cardiac mechanics, which is highly nonlinear, is numerically advanced in time with a fully implicit scheme [23,57].

We consider a first-order time splitting scheme where different time steps are employed according to the time scale of the specific problem [18]. We use a fine time resolution for electrophysiology, activation and circulation, whereas we use a larger time step for mechanics.

We employ the Finite Element Method (FEM) for the space discretization of electrophysiology, activation and mechanics models [46, 47]. We use either tetrahedral or hexahedral meshes and either \mathbb{P}_1 or \mathbb{Q}_1 finite element spaces for the space discretization of all the core models. This multiphysics problem presents different space resolutions according to the specific model at hand [49,50]. In the framework of cardiac electrophysiology, a very fine geometrical description is required to accurately capture the electric propagation due to fine-scale phenomena arising from the continuum modeling of the cellular level, especially

Table 2

Setup for all the numerical simulations of this study. The pacing point is the same for each stimulation protocol.

Code	Type	Software	h_{mean}	Time step	Stimulation protocol [s]	Settings
①	Electromechanics (SR)	life ^x (hexahedral meshes)	1.5 mm	$\Delta t = 5 \times 10^{-5}$ s (20 Δt for mechanics)	–	Tab. 3, 4, 5
②	Electrophysiology (VT)	CARP (tetrahedral meshes)	0.35 mm	$\Delta t = 2.5 \times 10^{-5}$ s	[0, 0.45, 0.90, 1.35, 1.80, 2.25, 2.54, 2.82]	Tab. 3
③	Electrophysiology (VT)	life ^x (hexahedral meshes)	1.5 mm	$\Delta t = 5 \times 10^{-5}$ s	[0, 0.45, 0.76, 1.04]	Tab. 3
④	Electromechanics (VT)	life ^x (hexahedral meshes)	1.5 mm	$\Delta t = 5 \times 10^{-5}$ s (20 Δt for mechanics)	[0, 0.45, 0.76, 1.04]	Tab. 3, 4, 7
⑤	Electromechanics (VT)	life ^x (hexahedral meshes)	1.5 mm	$\Delta t = 5 \times 10^{-5}$ s (20 Δt for mechanics)	[0, 0.45, 0.76, 1.04]	Tab.3, 4, 6

with the aim of reproducing and properly address arrhythmias [57]. On the other hand, cardiac mechanics requires a lower space resolution, whereas its numerical solution is more computationally demanding given the intrinsic high degree of nonlinearity: hence, using a smaller

number of nodes would lead to a significant gain on the final computational time, and in particular on the assembling phase [57]. Despite an intergrid approach, as proposed in Refs. [49,50,57], would be beneficial, in this work we do not consider different mesh resolutions for

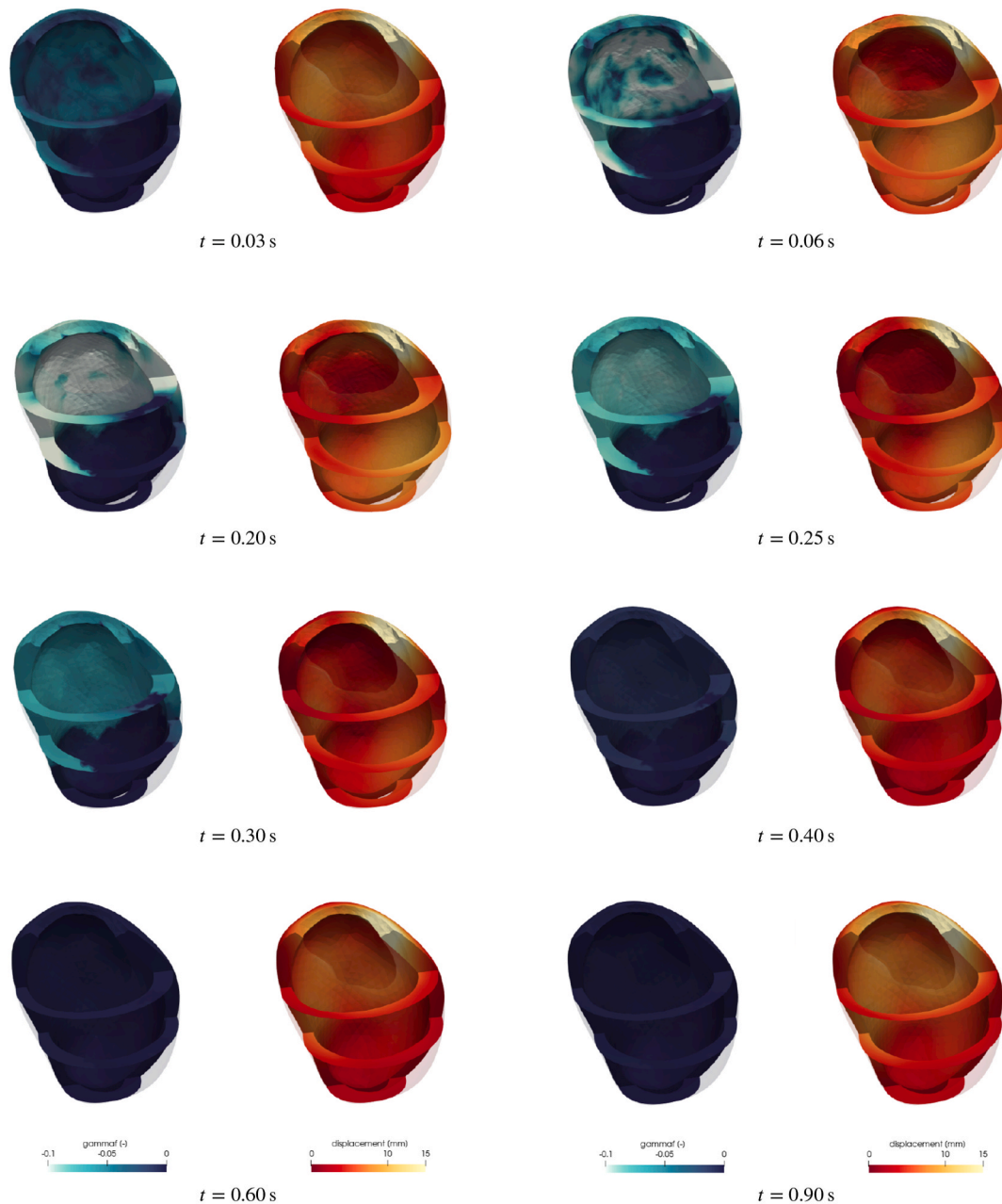


Fig. 7. Evolution in SR of γ_f and displacement magnitude $|d|$ for a patient-specific LV with ICM (Table 2, code ①). Each picture is warped by the displacement vector. See supplementary movie 1 for the whole SR numerical simulation. ①

electrophysiology and mechanics but rather use a mesh that balances numerical accuracy and computational efficiency for both models. We believe that using a consistent geometrical representation of the complex patient-specific ischemic regions is essential to our purposes, whereas grids of different resolutions would introduce a mismatch among the different core models.

For more information about the numerical details presented in this section we refer to Refs. [49,50,57].

We report the setups of all the numerical simulations of this paper in Table 2. We present numerical results in the context of cardiac electrophysiology and cardiac electromechanics, both in SR and during VT.

The mathematical models of Sec. 2 and the numerical methods presented in this section have been implemented in `lifex` (<https://lifex.gitlab.io/lifex>), a high-performance C++ library developed within the iHEART project and based on the `deal.II` (<https://www.dealii.org>) Finite Element core [7].

The numerical simulations were performed on a HPC facility available at MOX for the iHEART project. The entire cluster is endowed with 8 Intel Xeon Platinum 8160 processors, for a total of 192 computational cores and a total amount of 1.5 TB of available RAM.

4. Results

First, we perform parameters calibration in SR to fit the available clinical data. For this stage, we employ our 3D electromechanics model and a simplified 0D afterload model [57]. Then, for the VT, we consider the coupling between the 3D electromechanics model and the 0D circulation model. A calibration of the fully coupled model is out of scope and would be very challenging, especially due to the lack of data for this patient on atria, right ventricle and pulmonary circulation. Moreover, our purpose is to show the capabilities of this framework to investigate VTs in complex patient-specific ventricles, by providing both quantitative and qualitative observations on arrhythmias when electrophysiology, mechanics and fluid dynamics are coupled together. Further details about the latter aspect are provided in Sec. 4.2.

4.1. Simulations in sinus rhythm

We run several numerical simulations in SR (Table 2, code ①) to perform the calibration of the parameters of our electromechanical model. In particular, we manually tuned μ_A for active strain, K_{\perp}^{epi} , $K_{\parallel}^{\text{epi}}$, C_{\perp}^{epi} and $C_{\parallel}^{\text{epi}}$ for mechanics, resistance R and capacitance C of the 2-element Windkessel model. We remind that the reference configuration recovery is repeated for each new set of parameters. We apply a current $\tilde{I}_{\text{app}}(x, t)$, with a cubic distribution in space and peak $\tilde{I}_{\text{app}}^{\text{max}}$, for a duration of t_{app} , in different regions of the myocardium, to trigger the electrical signal in the LV. While the Purkinje network is not explicitly represented here [36,51], the stimuli generate a realistic propagation

pattern.

In Fig. 7 and supplementary movie 1 we depict the evolution of γ_f and displacement magnitude $|\mathbf{d}|$ over different time steps of the simulation. We highlight the heterogeneity in the activation of the myocardium, that leads to different contractility according to the specific region. Dense scars, which approximately occupy half of the LV, do not contract. Displacement magnitude $|\mathbf{d}|$ is dominant at the base, so that the LV is pushed towards the apex. Moreover, even if we do not perform a quantitative strain analysis, we get a qualitative match between the displacement field observed from our numerical simulation and the one coming from Cine MRI.

Supplementary video related to this article can be found at <https://doi.org/10.1016/j.compbimed.2021.104674>

In Fig. 8, we show the evolution of the LV volume over time for the patient, along with the PV loop. We provide a good quantitative match with Cine MRI for the evolution of blood pool volume over time, as well as for all values reported in Table 1. Indeed, even if we do not have at our disposal the evolution of the LV pressure over time, we also provide a

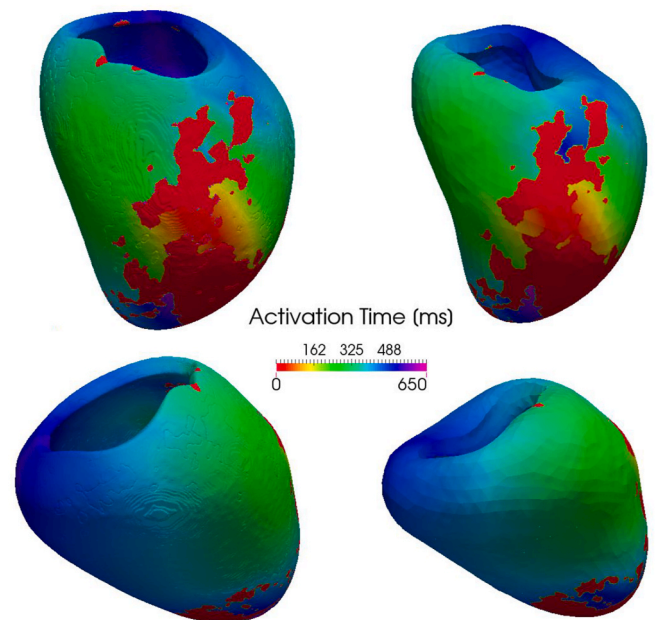


Fig. 9. Activation time for a patient-specific LV with ICM. Simulations from CARP (left, Table 2, code ②) and `lifex` (right, Table 2, code ③). We use a tetrahedral mesh ($h_{\text{mean}} = 0.35$ mm) in CARP. We consider the reference configuration, meshed with hexahedral elements ($h_{\text{mean}} = 1.5$ mm), in `lifex`. Only minor differences in terms of activation times can be observed between the two cases.

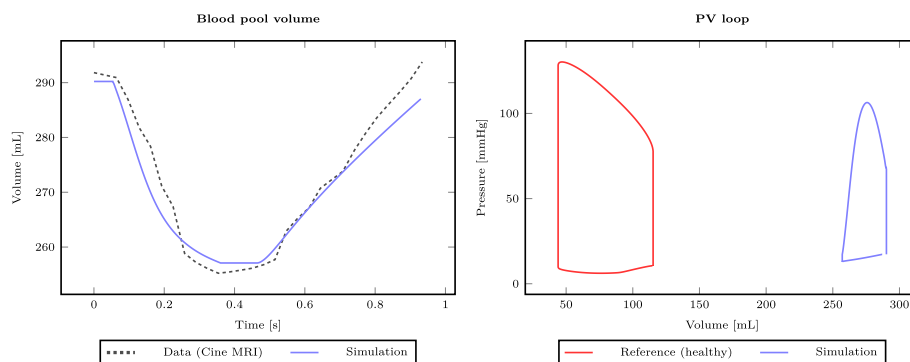


Fig. 8. Electromechanics simulation of a patient-specific LV with ICM (Table 2, code ①): blood pool volume over time (left) and PV loop (right). We highlight the comparison with clinical data and a reference healthy LV (taken from Ref. [50]).

match with the three available pointwise pressure measurements (i.e. MAP, SBP and DBP). Moreover, we underline the major differences with respect to a reference healthy PV loop (baseline simulation in Ref. [50]). The presence of ICM significantly dilates the LV over the years. As a consequence, the PV loop moves to the right and both the end diastolic volume (EDV) and the end systolic volume (ESV) increase. The end diastolic pressure (EDP) is generally higher with ICM, whereas the pressure peak is lower. Indeed, the capability of the LV to push blood into the aorta is strongly impaired. This coincides with smaller contractility and reduced EF.

4.2. Simulations under arrhythmia

We induced a VT by repeatedly stimulating the LV in one specific location. Again, we considered applied currents with intensities $\tilde{I}_{app}(x, t)$, cubic distribution in space, peak \tilde{I}_{app}^{max} and duration equal to t_{app} .

First, we run an electrophysiology simulation with the software package CARP (CardioSolv LLC) [65,66] on the original tetrahedral mesh ($h_{mean} = 0.35$ mm) and we induced a persistent VT by following the strategy proposed in Ref. [6] (Table 2, code ②). Then, we run an electrophysiology simulation with the `lifex` library on the hexahedral mesh ($h_{mean} = 1.5$ mm). We reproduced a similar activation map between the two numerical simulations, as shown in Fig. 9.

Next, we induced a persistent VT in the `lifex` electrophysiology simulation by using a shorter stimulation protocol (Table 2, code ③). While the VT observed in CARP has a basis cycle length $BCL \approx 0.390$ s, the one resulting from `lifex` shows a $BCL \approx 0.420$ s. This may be motivated by the use of different stimulation protocols, different mesh elements (tetrahedron vs. hexahedron) and different average mesh sizes (0.35 mm vs. 1.5 mm). In particular, given the same biophysical parametrizations, the mesh resolution has a significant impact on the effective conduction velocities [68]. The use of a shorter stimulation protocol and a coarser mesh resolution for the electrophysiology simulation performed in `lifex` are dictated by the complexity of the electromechanics simulations that we run afterwards. Indeed, to ensure maximum comparability of the results, electrophysiology and electromechanics simulations in `lifex` (Table 2, codes ①, ③④, ⑤) must run by employing the same numerical settings. The electrophysiology simulation performed in CARP stands as a reference solution, thanks to the fine space and time discretization that we adopted.

At this point, we run an electromechanics simulation under VT in `lifex` (Table 2, code ④). For the 0D circulation model, we consider the pathological parametrization reported in Tab. 7, with steady state initial conditions obtained after running the 0D model in SR for 100 heartbeats.

In Fig. 10 and supplementary movie 2 we compare the electrophysiology simulation (Table 2, code ③) with the electromechanics one (Table 2, code ④), by depicting the distribution of the transmembrane potential over time. In the time interval before the VT is triggered, no major differences between the two simulations are observed. On the other hand, after the VT is induced, its morphology around the isthmus significantly changes, as well as the conduction velocity of the electric signal. Indeed, the basis cycle length slightly increases, going to $BCL \approx 0.440$ s. Moreover, given a certain stimulation point and a certain sequence of S1–S2–S3 stimuli, we also conclude that in this case, if a VT is observed by considering electrophysiology only, a VT is also inducible by considering electromechanics.

Supplementary video related to this article can be found at <https://doi.org/10.1016/j.combiomed.2021.104674>

We also compared two electromechanics simulations which are performed by using a very different parametrization for the 0D circulation model: the first one (Table 2, code ⑤), which is reported in Tab. 6, resembles the activity of a heart without infarction, whereas the second one (Table 2, code ④), reported in Tab. 7, defines a pathological cardiovascular system with an infarcted heart. For further details about the second setting, we refer to Appendix A.

In Fig. 11 and supplementary movie 3 we highlight that different parametrizations of the circulation model induce different activation patterns and consequently different displacement fields. Nevertheless, we employ the very same sequence S1–S2–S3 stimuli to induce the VT. In Figs. 12 and 13 we illustrate the behavior of left atrium pressure and volume, left ventricle pressure and volume, arterial systemic pressure, mitral valve and aortic valve flow rates, during VT. We highlight that pressures in the aorta and in the LV are either dropping or oscillating on unsustainable levels for the cardiovascular system. Indeed, the LV is not able to push blood into the circulation system and the blood pool volume presents small variations over time. On the other hand, both left atrium pressure and volume are increasing during VT. In particular, due to electric isolation between atria and ventricles, the left atrium is assumed to follow the SR pacing during the simulated VT, which lasts for 10 s. Moreover, the flow rates of both mitral valve and aortic valve indicate that, even if no regurgitation occurs, there is no proper synchronization between the different cardiac chambers. For this reason, the left heart function is highly compromised. Finally, the PV loop of the LV is not stabilizing over a certain limit cycle that would not cause its impairment. For this reason, we can classify the VT as hemodynamically unstable regardless the parametrization of the 0D circulation model. This VT is critical for the patient and it may lead to SCD.

Supplementary video related to this article can be found at <https://doi.org/10.1016/j.combiomed.2021.104674>

5. Discussion

We developed an individualized computational model of the electromechanical activity in the LV of a patient with ICM, both in SR and VT. We manually personalized model parameters by means of numerical simulations in SR to fit the available clinical data. Then, we successfully induced a persistent VT and we studied its effects by combining electrophysiological, mechanical and hemodynamical observations. To the best of our knowledge, this is the first time in which a VT has been analyzed by electromechanics numerical simulations in a patient-specific ventricle with ICM.

Our mathematical parametrization incorporates the heterogeneous distribution of scars, grey zones and non-remodeled regions of human ventricles. Differently from previous works in literature [6,45], we model both electrophysiological and mechanical properties. While prior state-of-the-art electromechanical simulations seek to model both normal function and pathological conditions, including heart failure [59], or the impact of drugs [38], only the SR case is addressed and tissue heterogeneity of the myocardium is not kept into account over the entire electromechanics pipeline. In our electromechanical model, the coupling with a closed-loop system, as proposed in Ref. [49], and the numerical scheme developed in Ref. [50], allow for the effective numerical simulation of VTs. Indeed, this approach does not discriminate among the four different phases of the PV loop as in prior formulations of electromechanics models [13,23,39].

For SR simulations, we observed major differences in the hemodynamics of an LV with ICM with respect to a reference healthy case. Specifically, when incorporating the pathological remodeling, we noticed an increase in EDV and EDP, and a significant reduction in SV/EF and contractility. Regarding VT simulations, we showed that, if a certain sequence of stimuli delivered in a specific stimulation point induces a VT in electrophysiology simulations, a VT can be also observed with the same settings in electromechanics simulations. On the other hand, geometric MEFs alter the morphology of the VT, along with the overall conduction velocity, which slightly decreases with respect to the electrophysiology simulations. Indeed, the wave propagation is partially influenced by the displacement of the myocardium while running electromechanics simulations. This is due to the presence of the ventricular deformation inside the formulation of the monodomain equation. Geometric and physiological MEFs, such as the recruitment of SACs, are known to have this effect on the conduction velocity

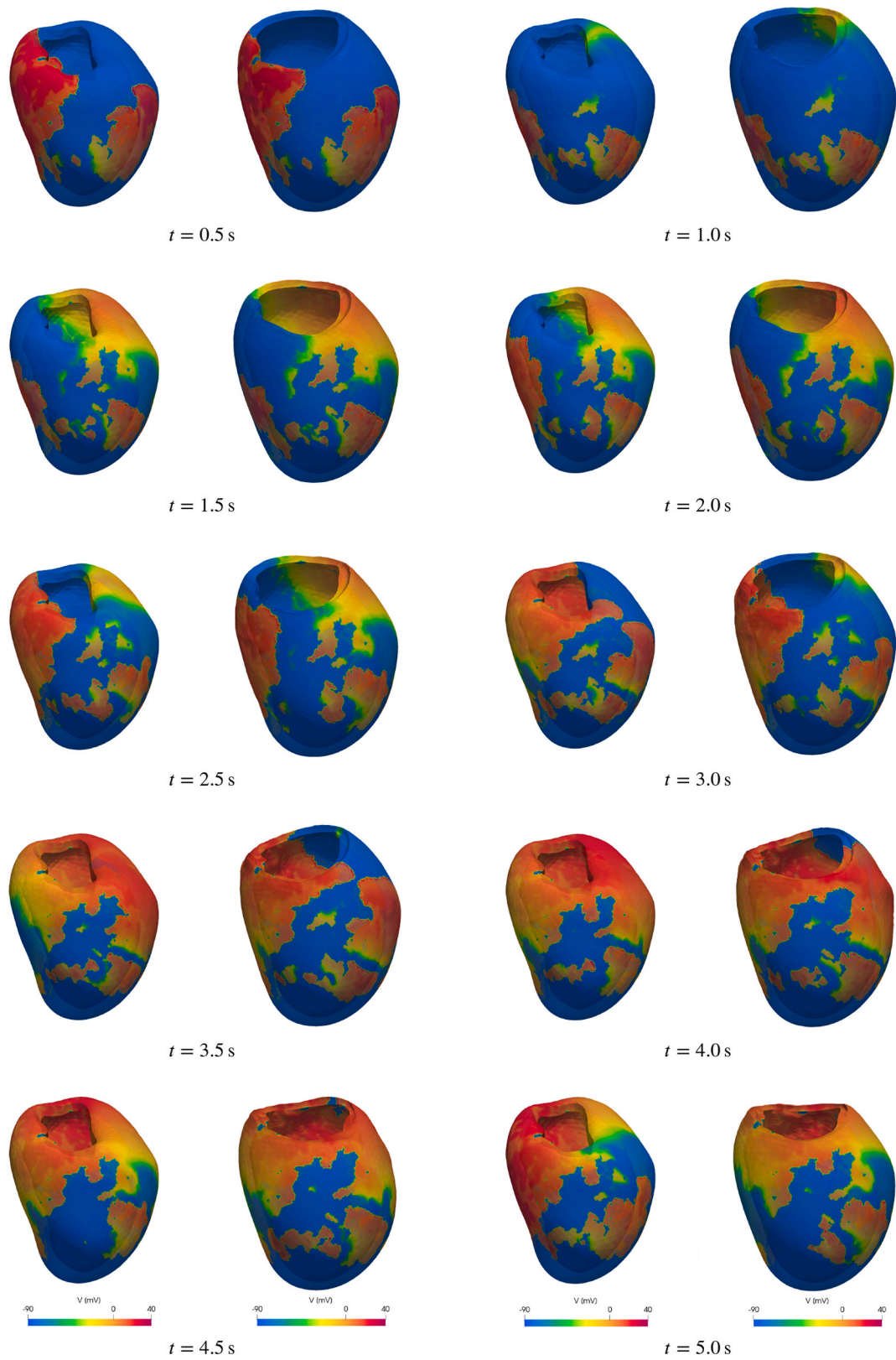


Fig. 10. Propagation of the transmembrane potential $V = 85.7u - 84$ during VT for a patient-specific LV with ICM. Electrophysiology simulation (left, Table 2, code ③) runs on the geometry retrieved from LGE-MRI (i.e. without reference configuration recovery). Electromechanics simulation (right, Table 2, code ④) is warped by the displacement vector. See supplementary movie 2 for the corresponding movie of VT initiation and resulting VTs.

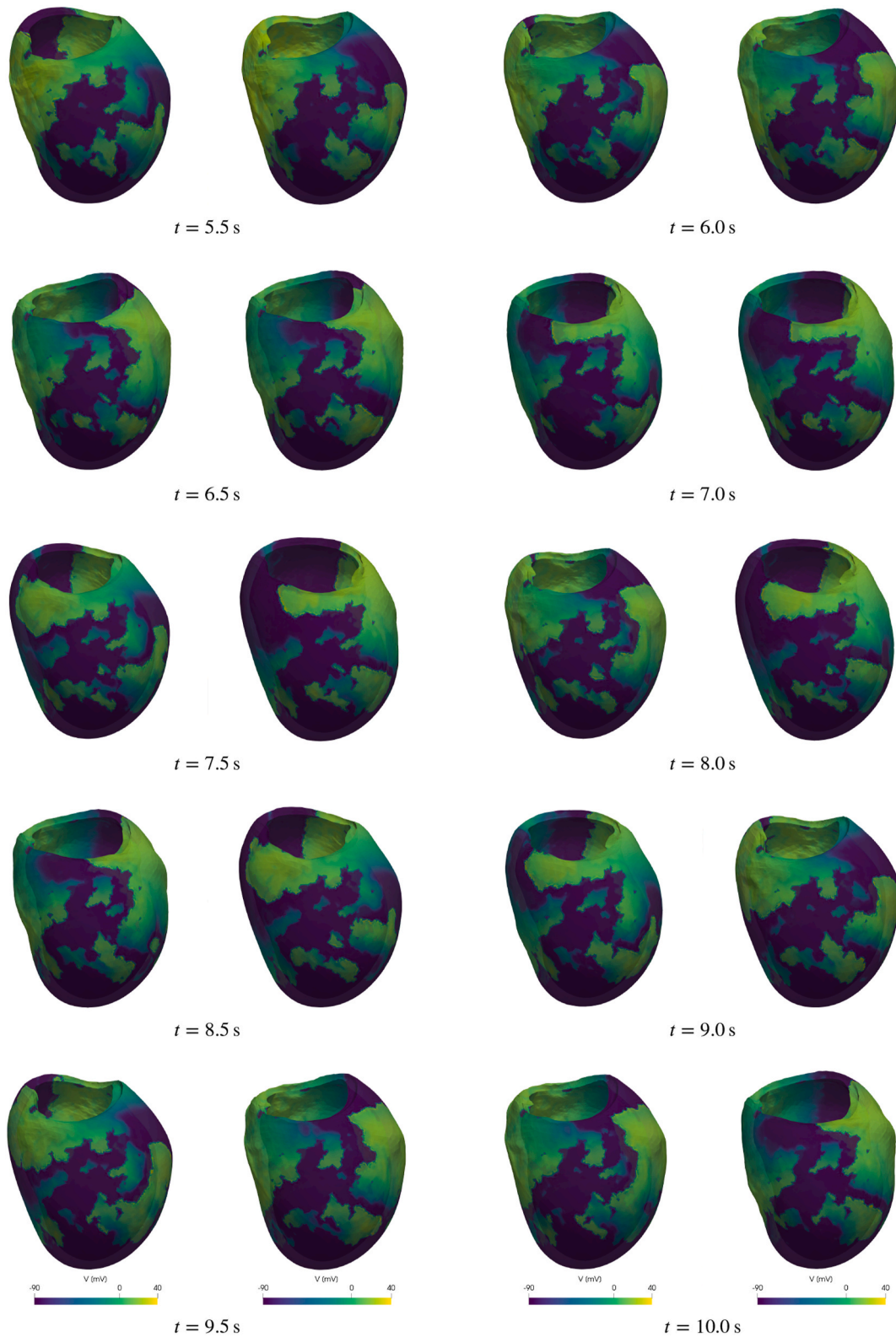


Fig. 11. Propagation of the transmembrane potential $V = 85.7u - 84$ during VT for a patient-specific LV with ICM. We depict two electromechanics simulations with a healthy parametrization of the circulation model (left, Table 2, code ⑤) and a pathological one (right, Table 2, code ④). The geometry is warped by the displacement vector in both cases. See supplementary movie 3 for the corresponding movie of VT initiation and resulting VTs.

restitution curves [31]. Moreover, geometric MEFs do not generally affect wave stability, while physiological MEFs may determine wave-breaks and the onset of fibrillation [17,32].

With the OD circulation model, we can also compute the evolution in

time of left ventricle pressure and volume, left atrium pressure and volume, arterial system pressure, mitral valve and aortic valve flow rates. With this information, we could classify a VT as either hemodynamically stable or unstable: the former would let the LV stabilize on a

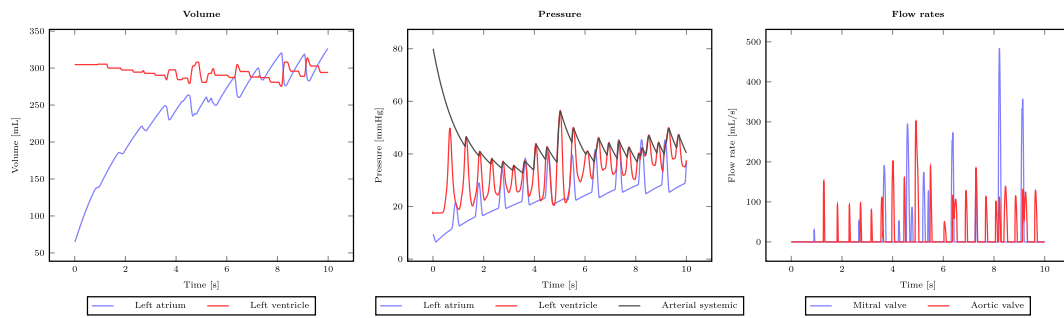


Fig. 12. Electromechanics simulation of VT for a patient-specific LV with ICM and a healthy parametrization of the circulation model (Table 2, code ⑤): blood pool volume over time for the 0D left atrium and the 3D LV (left), pressure over time for the left atrium, the left ventricle and the arterial systemic part of the cardiovascular system (center), flow rates of the mitral valve and the aortic valve (right).

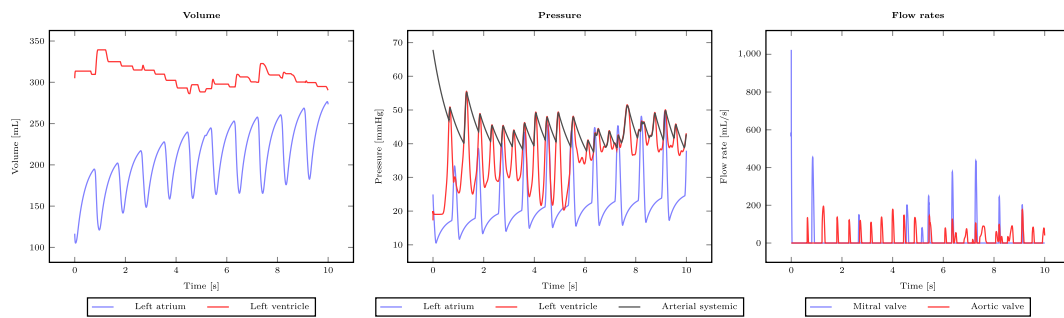


Fig. 13. Electromechanics simulation of VT for a patient-specific LV with ICM and a pathological parametrization of the circulation model (Table 2, code ④): blood pool volume over time for the 0D left atrium and the 3D LV (left), pressure over time for the left atrium, the left ventricle and the arterial systemic part of the cardiovascular system (center), flow rates of the mitral valve and the aortic valve (right).

PV loop that does not compromise its function, while the latter entails an unstable behavior of the arterial pressure over time, small variations of the blood pool volume of the LV over time, valves flow rates that are not synchronized [69]. We conclude that this specific VT is unstable. Having the ability to non-invasively assess a hemodynamically unstable VT is very useful from the clinical perspective. Our electromechanical model allows a thorough understanding of this VT using numerical simulations, whereas investigating this intraprocedurally could be difficult, since the patient might not support hemodynamically unstable VTs.

For this specific patient, very different parametrizations of the 0D closed-loop circulation model did not change the hemodynamical nature of the VT, which remained unstable. This may suggest that the hemodynamical nature of the VT is linked to the electromechanical substrate. Furthermore, this may have strong clinical implications, in particular when the parameters of the cardiovascular system of the patient are either not known or very uncertain. The electromechanics simulations presented in this paper can be employed for precision medicine and to gain a deeper understanding of VTs mechanisms thanks to detailed electric, mechanical and hemodynamical descriptions.

6. Conclusions

We presented a mathematical parametrization for the numerical simulation of cardiac electromechanics in patient-specific ventricles with ICM. We model scars and grey zones by properly changing the electromechanical properties of these regions. In particular, dense scars do not contract at all and are known to be stiff. With respect to healthy regions, grey zones show a reduced conduction velocity, a lower action potential peak after the upstroke and a longer action potential duration. Moreover, they have intermediate contractility and stiffness properties among scars and healthy areas. Our reference configuration recovery algorithm keeps into account the distribution of infarct zones, peri-infarct areas and non-remodeled regions.

We performed numerical simulations in SR to fit clinical data, by calibrating the parameters of our electromechanical model coupled with a 2-element Windkessel afterload model. We comment on the main differences observed in the PV loop of an LV with ICM with respect to a reference healthy case. Specifically, there is an increase in EDV and EDP, and a significant reduction in SV/EF and contractility.

We study a persistent VT by coupling the electromechanics model with a 0D closed-loop circulation model of the whole cardiovascular system. We compare the results with an electrophysiology simulation. Geometric MEFs change the morphology of the VT, which tends to follow the deformation of the myocardium, along with its *BCL*. On the other hand, geometric MEFs do not affect wave stability. Thanks to the 0D circulation model, we get the evolution in time of left ventricle pressure and volume, left atrium pressure and volume, arterial system pressure, mitral valve and aortic valve flow rates. We observe that very different parametrizations of the circulation model induce the same hemodynamical considerations for the patient at hand. Specifically, we conclude that this specific VT is unstable and could lead to sudden cardiac death if not promptly addressed by surgery.

7. Limitations

First, based on the available clinical data, we were able to personalize only some electromechanical parameters in SR. For instance, we do not calibrate the passive mechanics parameters related to the Guccione constitutive law because we are unable to fit a Klotz curve for this patient-specific case [33]. Indeed, we reuse the same parametrization provided in Ref. [54] on failing swine hearts. Second, our current model only considers the effect of geometric MEFs. The effects of physiological MEFs, such as SACs [31,64], and more accurate geometric MEFs [37] would need to be addressed as well, to assess whether the conclusions drawn in this paper are still valid. Nevertheless, the impact of the modelled geometric MEFs in the electromechanics simulations entails

significant changes with respect to electrophysiology-only simulations. The third limitation of our current study is that only one in silico electrophysiology VT induced from one pacing location is used as the reference. It would be also interesting to understand if there are VTs that can be triggered only by means of electromechanics simulations, and not in electrophysiology ones, and vice-versa. This would require more numerical simulations with different pacing locations distributed all over the ventricle. The fourth limitation is that we do not simulate hemodynamically tolerated VTs in this study, which would be important for clinical applications. However, in this paper we focus on more complex and dangerous scenarios, i.e. unstable VTs. The fifth limitation is given by the fact that the numerical results coming from `lifex` may not be fully resolved, i.e. further refinements in mesh sizes and time steps may affect the outcomes of the simulations. Nevertheless, both the activation pattern and the VTs observed in `lifex` match quite well the one obtained in CARP, where both space and time scales for cardiac electrophysiology are well resolved. Indeed, scars, grey zones and healthy areas are properly represented in all the computational domains considered in this study. The sixth limitation is that the same mesh is used for electrophysiology and mechanics. From the numerical perspective, this entails high computational costs. For this reason, we have to develop new techniques to properly treat heterogeneous tissue

on different space resolutions. We believe that this approach would lead to faster numerical simulations without compromising accuracy, since similar results are observed between different resolutions in electromechanics simulations [57]. The seventh limitation is that we have only considered a single LV with ICM instead of a bi-ventricular model. Finally, our approach was evaluated only on one patient. For better generalizability to clinical settings, numerical simulations should be conducted on a larger patient cohort.

Declaration of competing interest

The authors declare no conflict of interest.

Acknowledgements

This project has received funding from the European Research Council (ERC) under the European Union's Horizon 2020 research and innovation programme (grant agreement No 740132, iHEART - An Integrated Heart Model for the simulation of the cardiac function, P.I. Prof. A. Quarteroni). M. Salvador acknowledges Dr. S. Pagani and Dr. F. Regazzoni for their advice in cardiac electrophysiology and the useful discussions about cardiac electromechanics.

Appendix A. Model parameters

We provide the list of parameters adopted for both SR and VT simulations (Sec. 4.1 and Sec. 4.2). Specifically, Tab. 3 contains the parameters related to the electrophysiology model and Tab. 4 those related to the mechanics model. For the TTP06 model, we adopt the parameters of the original paper (for myocardial cells) [61]. Finally, Tab. 6 and Tab. 7 contains the parameters of the circulation model in healthy and pathological conditions, respectively. In particular, for the pathological case we increased the resistance of the arterial system while decreasing its capacitance, to maintain their product almost constant. Moreover, we raised the passive elastance of the right ventricle while reducing the active one. Indeed, both from LGE-MRI and Cine MRI, we noticed that the right ventricle of this patient might be affected by ischemic cardiomyopathy as well. Moreover, it presents a small dimension and a low SV (≈ 25 mL). Finally, we considered a fibrosis-free dilated left atrium, with higher active elastance and higher resting volume.

Table 3
Parameters of the electrophysiology model (taken from Refs. [6,50]).

Variable	Value	Unit	Variable	Value	Unit
Conductivity tensor			Applied current		
σ_l	0.67×10^{-4}	$\text{m}^2 \text{s}^{-1}$	$\mathcal{I}_{\text{app}}^{\text{max}}$	35	V s^{-1}
σ_t	0.07×10^{-4}	$\text{m}^2 \text{s}^{-1}$	t_{app}	5e-3	s
σ_n	0.07×10^{-4}	$\text{m}^2 \text{s}^{-1}$			

Table 4
Parameters for passive mechanics (taken from Ref. [50]), boundary conditions and mechanical activation (manually calibrated). The remaining parameters of the active strain model are taken from Ref. [57].

Variable	Value	Unit	Variable	Value	Unit
Constitutive law			Boundary conditions		
B	5×10^4	Pa	K_{\perp}^{epi}	2×10^5	Pa m^{-1}
C	0.88×10^3	Pa	$K_{\parallel}^{\text{epi}}$	2×10^5	Pa m^{-1}
b_{ff}	8	–	C_{\perp}^{epi}	2×10^4	Pa s m^{-1}
b_{ss}	6	–	$C_{\parallel}^{\text{epi}}$	2×10^3	Pa s m^{-1}
b_{nn}	3	–	Activation		
b_{fs}	12	–	$\hat{\mu}_A^1$	1.5	$\text{s } \mu\text{M}^2$
b_{fn}	3	–	$\hat{\mu}_A^2$	3	$\text{s } \mu\text{M}^2$
b_{sn}	3	–	$\hat{\mu}_A^3$	1.2	$\text{s } \mu\text{M}^2$
ρ_s	10^3	kg m^{-3}	$\hat{\mu}_A^4$	5	$\text{s } \mu\text{M}^2$

Table 5
Parameters of the Windkessel model, which are manually calibrated to fit the clinical data reported in Table 1

Variable	Value	Unit
C	4.0e-10	m ³ Pa ⁻¹
R	5.0e7	Pa s m ⁻³

Table 6
Parameters of the circulation model in healthy conditions. We consider a heartbeat period $T = 0.92$ s. The remaining parameters are taken as in Ref. [50].

Variable	Value	Unit	Variable	Value	Unit
External circulation			Cardiac chambers		
R_{AR}^{SYS}	0.64	mmHg s mL ⁻¹	E_{RV}^{pass}	0.05	mmHg mL ⁻¹
R_{VEN}^{SYS}	0.035684	mmHg s mL ⁻¹	$E_{LA}^{act,max}$	0.07	mmHg mL ⁻¹
R_{VEN}^{PUL}	0.1625	mmHg s mL ⁻¹	$E_{RV}^{act,max}$	0.55	mmHg mL ⁻¹
C_{AR}^{SYS}	1.2	mL mmHg ⁻¹	$V_{0,LA}$	4.0	mL

Table 7
Parameters of the circulation model in pathological conditions. We consider a heartbeat period $T = 0.92$ s. The remaining parameters are taken as in Ref. [50].

Variable	Value	Unit	Variable	Value	Unit
External circulation			Cardiac chambers		
R_{AR}^{SYS}	1.0	mmHg s mL ⁻¹	E_{RV}^{pass}	0.3	mmHg mL ⁻¹
R_{VEN}^{SYS}	0.26	mmHg s mL ⁻¹	$E_{LA}^{act,max}$	0.14	mmHg mL ⁻¹
R_{VEN}^{PUL}	0.035684	mmHg s mL ⁻¹	$E_{RV}^{act,max}$	0.4	mmHg mL ⁻¹
C_{AR}^{SYS}	0.8	mL mmHg ⁻¹	$V_{0,LA}$	5.0	mL

References

[1] Materialise Mimics website. <https://www.materialise.com/en/medical/mimics-innovation-suite/mimics>.

[2] The vascular modeling toolkit website. www.vmtk.org.

[3] D. Ambrosi, G. Arioli, F. Nobile, et al., Electromechanical coupling in cardiac dynamics: the active strain approach, *SIAM J. Appl. Math.* 71 (2011) 605–621.

[4] D. Ambrosi, S. Pezzuto, Active stress vs. active strain in mechanobiology: constitutive issues, *J. Elasticity* 107 (2012) 199–212.

[5] L. Antiga, M. Piccinelli, L. Botti, et al., An image-based modeling framework for patient-specific computational hemodynamics, *Med. Biol. Eng. Comput.* 46 (2008) 1097–1112.

[6] H. Arevalo, F. Vadakkumpadan, E. Guallar, et al., Arrhythmia risk stratification of patients after myocardial infarction using personalized heart models, *Nat. Commun.* 7 (2016) 113–128.

[7] D. Arndt, W. Bangerth, B. Blais, et al., The deal.II library, version 9.2, *J. Numer. Math.* 28 (3) (2020) 131–146.

[8] C.M. Augustin, A. Neic, M. Liebmann, et al., Anatomically accurate high resolution modeling of human whole heart electromechanics: a strongly scalable algebraic multigrid solver method for nonlinear deformation, *J. Comput. Phys.* 305 (2016) 622–646.

[9] L. Azzolin, L. Dede', A. Gerbi, A. Quarteroni, Effect of fibre orientation and bulk modulus on the electromechanical modelling of human ventricles, *Math. Eng.* 2 (mine-02-04-028) (2020) 614.

[10] L. Barbarotta, S. Rossi, L. Dede', A. Quarteroni, A transmurally heterogeneous orthotropic activation model for ventricular contraction and its numerical validation, *Num. Methods Biomed. Eng.* 34 (2018).

[11] J.D. Bayer, R.C. Blake, G. Plank, N. Trayanova, A novel rule-based algorithm for assigning myocardial fiber orientation to computational heart models, *Ann. Biomed. Eng.* 40 (2012) 2243–2254.

[12] M. Caruel, R. Chabiniok, P. Moireau, et al., Dimensional reductions of a cardiac model for effective validation and calibration, *Biomech. Model. Mechanobiol.* 13 (4) (2014) 897–914.

[13] D. Chapelle, M.A. Fernández, J.F. Gerbeau, et al., Numerical simulation of the electromechanical activity of the heart, *Int. Conf. Funct. Imag. Model. Heart* 5528 (2009) 357–365.

[14] A. Cheng, F. Langer, F. Rodriguez, et al., Transmural cardiac strains in the lateral wall of the ovine left ventricle, *Am. J. Physiol. Heart Circ. Physiol.* 288 (2005) 1546–1556.

[15] A. Collet, Numerical Modeling of the Cardiac Mechano-Electric Feedback within a Thermo-Electro-Mechanical Framework. *Study of its Consequences on Arrhythmogenesis*, PhD thesis, Université de Liège, 2015.

[16] P. Colli Franzone, L.F. Pavarino, S. Scacchi, *Mathematical Cardiac Electrophysiology*, Springer, 2014.

[17] P. Colli Franzone, L.F. Pavarino, S. Scacchi, Effects of mechanical feedback on the stability of cardiac scroll waves: a bidomain electro-mechanical simulation study, *Chaos: Interdiscipl. J. Nonlinear Sci.* 27 (9) (2017), 093905.

[18] L. Dede', A. Gerbi, A. Quarteroni, Segregated Algorithms for the Numerical Simulation of Cardiac Electromechanics in the Left Human Ventricle, Springer International Publishing, Cham, 2020, pp. 81–116.

[19] S. Doll, K. Schweizerhof, On the development of volumetric strain energy functions, *J. Appl. Math.* 67 (2000) 17–21.

[20] A.E. Epstein, et al., Acc/aha/hrs 2008 guidelines for device-based therapy of cardiac rhythm abnormalities: a report of the american college of cardiology/american heart association task force on practice guidelines (writing committee to revise the acc/aha/naspe 2002 guideline update for implantation of cardiac pacemakers and antiarrhythmia devices): developed in collaboration with the american association for thoracic surgery and society of thoracic surgeons, *Circulation* 117 (2008) e350–e408.

[21] M. Fedele, A. Quarteroni, Polygonal surface processing and mesh generation tools for the numerical simulation of the cardiac function, *Int. J. Num. Methods Biomed. Eng.* 37 (2021) e3435.

[22] T. Gerach, S. Schuler, J. Fröhlich, and et al. Electro-mechanical whole-heart digital twins: a fully coupled multi-physics approach. *Mathematics*, 9(11), 2021.

[23] A. Gerbi, L. Dede', A. Quarteroni, A monolithic algorithm for the simulation of cardiac electromechanics in the human left ventricle, *Math. Eng.* 1 (2019) 1–37.

[24] A.M. Gordon, A.F. Huxley, F.J. Julian, The variation in isometric tension with sarcomere length in vertebrate muscle fibres, *J. Physiol.* 184 (1966) 170–192.

[25] J.M. Guccione, A.D. McCulloch, Finite element modeling of ventricular mechanics, in: *Theory of Heart*, Springer, 1991, pp. 121–144.

[26] J.M. Guccione, A.D. McCulloch, L.K. Waldman, Passive material properties of intact ventricular myocardium determined from a cylindrical model, *J. Biomech. Eng.* 113 (1991) 42–55.

[27] V. Gurev, T. Lee, J. Constantino, H. Arevalo, N. Trayanova, Models of cardiac electromechanics based on individual hearts imaging data, *Biomech. Model. Mechanobiol.* 10 (2011) 295–306.

- [28] E. Heiberg, J. Sjögren, M. Ugander, Design and validation of segment-freely available software for cardiovascular image analysis, *BMC Med. Imag.* 10 (1–13) (2010).
- [29] M. Hirschvogel, M. Bassilious, L. Jagschies, et al., A monolithic 3d-0d coupled closed-loop model of the heart and the vascular system: experiment-based parameter estimation for patient-specific cardiac mechanics, *Int. J. Num. Methods Biomed. Eng.* 33 (8) (2017), e2842.
- [30] G.A. Holzapfel, R.W. Ogden, Constitutive modelling of passive myocardium: a structurally based framework for material characterization, *Math., Phys. Eng. Sci.* 367 (2009) 3445–3475.
- [31] Y. Hu, V. Gurev, J. Constantino, et al., Effects of mechano-electric feedback on scroll wave stability in human ventricular fibrillation, *PLoS One* 8 (1–9) (2013).
- [32] R.H. Keldermann, M.P. Nash, H. Gelderblom, et al., Electromechanical wavebreak in a model of the human left ventricle, *Am. J. Physiol. Heart Circ. Physiol.* 299 (1) (2010) H134–H143.
- [33] S. Klotz, I. Hay, M.L. Dickstein, et al., Single-beat estimation of end-diastolic pressure-volume relationship: a novel method with potential for noninvasive application, *Am. J. Physiol. Heart Circ. Physiol.* 291 (2006) H403–H412.
- [34] P. Kohl, F. Sachs, M. Franz, *Cardiac Mechano-Electric Coupling and Arrhythmias*, Oxford University Press, 2011.
- [35] S. Land, S.J. Park-Holohan, N.P. Smith, et al., A model of cardiac contraction based on novel measurements of tension development in human cardiomyocytes, *J. Mol. Cell. Cardiol.* 106 (2017) 68–83.
- [36] M. Landajuela, C. Vergara, A. Gerbi, et al., Numerical approximation of the electromechanical coupling in the left ventricle with inclusion of the purkinje network, *Int. J. Num. Methods Biomed. Eng.* 34 (7) (2018), e2984.
- [37] F. Levrero-Florencio, F. Margara, E. Zacur, et al., Sensitivity analysis of a strongly-coupled human-based electromechanical cardiac model: effect of mechanical parameters on physiologically relevant biomarkers, *Comput. Methods Appl. Mech. Eng.* 361 (2020) 112762.
- [38] F. Margara, Z.J. Wang, F. Levrero-Florencio, et al., In-silico human electro-mechanical ventricular modelling and simulation for drug-induced pro-arrhythmia and inotropic risk assessment, *Prog. Biophys. Mol. Biol.* 159 (2021) 58–74.
- [39] F. Nobile, A. Quarteroni, R. Ruiz-Baier, An active strain electromechanical model for cardiac tissue, *Int. J. Num. Methods Biomed. Eng.* 28 (2012) 52–71.
- [40] J.H. Omens, K.D. May, A.D. McCulloch, Transmural distribution of three-dimensional strain in the isolated arrested canine left ventricle, *Am. J. Physiol.* 261 (1991) 918–928.
- [41] M. Peirlinck, F.S. Costabal, et al., Precision medicine in human heart modeling, *Biomech. Model. Mechanobiol.* 20 (2021) 803–831.
- [42] M. Pfaller, J. Hörmann, M. Weigl, et al., The importance of the pericardium for cardiac biomechanics: from physiology to computational modeling, *Biomech. Model. Mechanobiol.* 18 (2019) 503–529.
- [43] R. Piersanti, P.C. Africa, M. Fedele, et al., Modeling cardiac muscle fibers in ventricular and atrial electrophysiology simulations, *Comput. Methods Appl. Mech. Eng.* 373 (2021) 113468.
- [44] M. Potse, B. Dubé, J. Richer, et al., A comparison of monodomain and bidomain reaction-diffusion models for action potential propagation in the human heart, *IEEE (Inst. Electr. Electron. Eng.) Trans. Biomed. Eng.* 53 (2006) 2425–2435.
- [45] A. Prakosa, H. Arevalo, D. Dongdong, et al., Personalized virtual-heart technology for guiding the ablation of infarct-related ventricular tachycardia, *Nat. Biomed. Eng.* 2 (2018) 732–740.
- [46] A. Quarteroni, L. Dede', A. Manzoni, C. Vergara, *Mathematical Modelling of the Human Cardiovascular System: Data, Numerical Approximation, Clinical Applications*, Cambridge University Press, 2019.
- [47] A. Quarteroni, R. Sacco, F. Saleri, *Numerical Mathematics*, Springer, 2010.
- [48] F. Regazzoni, L. Dede', A. Quarteroni, Active contraction of cardiac cells: a model for sarcomere dynamics with cooperative interactions, *Biomech. Model. Mechanobiol.* 17 (2018) 1663–1686.
- [49] F. Regazzoni, M. Salvador, P.C. Africa, et al., A Cardiac Electromechanics Model Coupled with a Lumped Parameters Model for Closed-Loop Blood Circulation. Part I: Model Derivation, 2020 arXiv preprint arXiv:2011.15040.
- [50] F. Regazzoni, M. Salvador, P.C. Africa, et al., A Cardiac Electromechanics Model Coupled with a Lumped Parameters Model for Closed-Loop Blood Circulation. Part II: Numerical Approximation, 2020 arXiv preprint arXiv:2011.15051.
- [51] D. Romero, R. Sebastian, B.H. Bijmens, et al., Effects of the Purkinje system and cardiac geometry on biventricular pacing: a model study, *Ann. Biomed. Eng.* 38 (2010) 1388–1398.
- [52] S. Rossi, R. Ruiz-Baier, L.F. Pavarino, A. Quarteroni, Orthotropic active strain models for the numerical simulation of cardiac biomechanics, *Int. J. Num. Methods Biomed. Eng.* 28 (2012) 761–788.
- [53] R. Ruiz-Baier, A. Gizzi, S. Rossi, et al., Mathematical modelling of active contraction in isolated cardiomyocytes, *Math. Med. Biol.: J. IMA* 31 (2014) 259–283.
- [54] K.L. Sack, E. Aliotta, D.B. Ennis, et al., Construction and validation of subject-specific biventricular finite-element models of healthy and failing swine hearts from high-resolution dt-mri, *Front. Physiol.* 9 (2018) 539.
- [55] J.E. Saffitz, H.L. Kanter, K.G. Green, et al., Tissue-specific determinants of anisotropic conduction velocity in canine atrial and ventricular myocardium, *Circ. Res.* 74 (1994) 1065–1070.
- [56] J. Sainte-Marie, D. Chapelle, R. Cimrman, et al., Modeling and estimation of the cardiac electromechanical activity, *Comput. Struct.* 84 (2006) 1743–1759.
- [57] M. Salvador, L. Dede', A. Quarteroni, An intergrid transfer operator using radial basis functions with application to cardiac electromechanics, *Comput. Mech.* 66 (2020) 491–511.
- [58] J.C. Simo, R.L. Taylor, Quasi-incompressible finite elasticity in principal stretches. continuum basis and numerical algorithms, *Comput. Methods Appl. Mech. Eng.* 85 (1991) 273–310.
- [59] M. Stocchi, C.M. Augustin, M.A.F. Gsell, et al., A publicly available virtual cohort of four-chamber heart meshes for cardiac electro-mechanics simulations, *PLoS One* 15 (1–26) (2020).
- [60] P. Taggart, P.M. Sutton, Cardiac mechano-electric feedback in man: clinical relevance, *Prog. Biophys. Mol. Biol.* 71 (1) (1999) 139–154.
- [61] K.H. ten Tusscher, A.V. Panfilov, Alternans and spiral breakup in a human ventricular tissue model, *Am. J. Physiol. Heart Circ. Physiol.* 291 (2006) 1088–1100.
- [62] V. Timmermann, L.A. Dejgaard, K. Haugaa, et al., An integrative appraisal of mechano-electric feedback mechanisms in the heart, *Prog. Biophys. Mol. Biol.* 130 (Pt B) (2017) 404–417.
- [63] N. Trayanova, Whole-heart modeling: applications to cardiac electrophysiology and biomechanics, *Circ. Res.* 108 (2011) 113–128.
- [64] N. Trayanova, W. Li, J. Eason, P. Kohl, Effect of stretch-activated channels on defibrillation efficacy, *Heart Rhythm* 1 (67–77) (2004), 06.
- [65] E.J. Vigmond, M. Hughes, G. Plank, L.J. Leon, Computational tools for modeling electrical activity in cardiac tissue, *J. Electrocardiol.* 36 (2003) 69–74.
- [66] E.J. Vigmond, R. Weber dos Santos, A.J. Prassl, et al., Solvers for the cardiac bidomain equations, *Prog. Biophys. Mol. Biol.* 96 (1) (2008) 3–18.
- [67] T. Washio, J. Okada, A. Takahashi, et al., Multiscale heart simulation with cooperative stochastic cross-bridge dynamics and cellular structures, *Multiscale Model. Simul.* 11 (4) (2013) 965–999.
- [68] L.A. Woodworth, B. Cansiz, M. Kaliske, A numerical study on the effects of spatial and temporal discretization in cardiac electrophysiology, *Int. J. Num. Methods Biomed. Eng.* 37 (5) (2021), e3443.
- [69] T. Yamada, G.N. Kay, Optimal ablation strategies for different types of ventricular tachycardias, *Nat. Rev. Cardiol.* 9 (2012) 512–525.
- [70] F.C. Yin, C.C. Chan, R.M. Judd, Compressibility of perfused passive myocardium, *Am. J. Physiol. Heart Circ. Physiol.* 271 (1996) 1864–1870.