

PAPER • OPEN ACCESS

# Monodromy dependence and symplectic geometry of isomonodromic tau functions on the torus

To cite this article: Fabrizio Del Monte *et al* 2023 *J. Phys. A: Math. Theor.* **56** 294002

View the [article online](#) for updates and enhancements.

You may also like

- [Joint distribution of the first and second eigenvalues at the soft edge of unitary ensembles](#)  
N S Witte, F Bornemann and P J Forrester
- [Andrei Andreevich Bolibrukh in life and science \(30 January 1950 - 11 November 2003\)](#)  
Dmitry V Anosov and V P Leksin
- [Isomonodromic deformation of Lamé connections, Painlevé VI equation and Okamoto symmetry](#)  
F. Loray

# Monodromy dependence and symplectic geometry of isomonodromic tau functions on the torus

Fabrizio Del Monte<sup>1,2,\*</sup> , Harini Desiraju<sup>3</sup>  
and Pavlo Gavrylenko<sup>4,5,6</sup>

<sup>1</sup> Centre de Recherches Mathématiques (CRM), Université de Montréal C. P. 6128, succ. Centre Ville, Montréal, Québec, Canada H3C 3J7

<sup>2</sup> Department of Mathematics and Statistics, Concordia University, 1455 de Maisonneuve Blvd. W. Montréal QC H3G 1M8 Canada

<sup>3</sup> School of Mathematics and Statistics University of Sydney, F07 Carslaw building, Sydney, Australia

<sup>4</sup> Section de Mathématiques, Université de Genève, Geneva, 1205, Switzerland

<sup>5</sup> Max-Planck-Institut für Mathematik, 53111 Bonn, Germany

<sup>6</sup> Bogolyubov Institute for Theoretical Physics, Metrologichna 14-b, 03143 Kyiv, Ukraine

E-mail: [f.delmonte.mp@gmail.com](mailto:f.delmonte.mp@gmail.com)

Received 12 December 2022; revised 30 May 2023

Accepted for publication 7 June 2023

Published 30 June 2023



CrossMark

## Abstract

We compute the monodromy dependence of the isomonodromic tau function on a torus with  $n$  Fuchsian singularities and  $SL(N)$  residue matrices by using its explicit Fredholm determinant representation. We show that the exterior logarithmic derivative of the tau function defines a closed one-form on the space of monodromies and times, and identify it with the generating function of the monodromy symplectomorphism. As an illustrative example, we discuss the simplest case of the one-punctured torus in detail. Finally, we show that previous results obtained in the genus zero case can be recovered in a straightforward manner using the techniques presented here.

\* Author to whom any correspondence should be addressed.



Original Content from this work may be used under the terms of the [Creative Commons Attribution 4.0 licence](https://creativecommons.org/licenses/by/4.0/). Any further distribution of this work must maintain attribution to the author(s) and the title of the work, journal citation and DOI.

Keywords: tau functions, isomonodromic deformations, Painlevé equations, flat connections

(Some figures may appear in colour only in the online journal)

## 1. Introduction

Isomonodromic tau functions are defined as the generating functions of Poisson commuting Hamiltonians  $H_i$  that generate flows in times  $t_i \in \mathbb{T}$ ,

$$d_t \log \mathcal{T} := \sum_{\text{times } t_i} dt_i \partial_{t_i} \log \mathcal{T} = \omega_{JMU} := \sum_{\text{times } t_i} H_i dt_i. \quad (1.1)$$

Here  $d_t$  is the exterior differential on the space of times  $\mathbb{T}$ ,  $\omega_{JMU} \in T^*\mathbb{T}$  is the so called Jimbo-Miwa-Ueno (JMU) one-form [17], and its closedness

$$d_t \omega_{JMU} = 0 \quad (1.2)$$

is equivalent to the consistency of the Hamiltonians flows, describing deformations of a linear system of ODEs

$$\partial_z \Phi(z) = \Phi(z)A(z) \quad (1.3)$$

that preserve its monodromies. The Hamiltonians themselves are obtained from contour integrals of  $\frac{1}{2} \text{tr} A^2(z)$ . Through the Riemann-Hilbert correspondence that maps the space  $\mathcal{A}$  of coefficients of the linear system to the space of monodromies  $\mathcal{M}$ , the Hamiltonians can be written in terms of the times and the monodromy data. The tau function  $\mathcal{T}$  in (1.1) is defined only up to an overall monodromy-dependent constant  $C(M)$ , and extending it to a closed one-form on  $T^*(\mathcal{M} \times \mathbb{T})$  allows to determine the asymptotic behaviour of the tau function near its critical points, while revealing the symplectic properties of the tau function.

In [14, 16, 22], building upon an earlier work [2, 3], a procedure to construct such an extended closed one-form was presented based on the Riemann-Hilbert approach to Painlevé equations. The one-form was explicitly written for the cases of Painlevé VI, II, III<sub>1</sub>, and I, where it was used to obtain the ratios of the corresponding tau functions at the critical points, known as the connection constants, a longstanding problem in the theory of Painlevé equations. A Hamiltonian approach to this construction was put forward in [15] for all Painlevé equations and the Schlesinger system. The closed one-form for the Schlesinger system was written explicitly in [5], with an elegant interpretation of the tau function as the generating function of the monodromy symplectomorphism, i.e. a homomorphism from a symplectic leaf in the space of coefficients  $\mathcal{A}$  of the system to a symplectic leaf in the monodromy manifold  $\mathcal{M}$ .

In this paper, we determine the closed one-form  $d \log \mathcal{T}$  for tau functions on a torus with regular singularities by using their Fredholm determinant representation [10], and show that they generate the monodromy symplectomorphism.

A key technique in our construction involves the Fredholm determinant representation, which is obtained using a pants decomposition of the torus (see theorem 1, [10]). Specifically, the pants decomposition of the torus with  $n$  punctures consists of  $n$  spheres with three simple poles, which translates to describing the local behaviour of the solution to the linear system we call  $L$  in terms of the solution to an appropriate linear problem defined on a sphere with three simple poles denoted by  $L_{3pt}$ . It then turns out that the kernel of the Fredholm determinant is completely described by  $n$  such three-point solutions with suitable shifts that capture the topology of the torus. The tau function of the torus is then related to the Fredholm determinant by a proportionality factor. The pith of the monodromy dependence of the tau function therefore

lies in understanding the derivative of the Fredholm determinant w.r.t the monodromy data. The resulting one-form has the structure

$$d \log \mathcal{T} = \omega - \omega_{3pt}, \quad d = d_t + d_{\mathcal{M}}, \tag{1.4}$$

where  $\omega$  depends on the data coming from the global properties of  $L$ , whereas  $\omega_{3pt}$  depends on the local behaviour described by  $L_{3pt}$ . Moreover,  $\omega$  depends on the monodromy data and the times, while  $\omega_{3pt}$  depends only on the monodromy data. Such a structure of the one-form is instrumental in obtaining the connection constant, which will be the subject of an upcoming paper. We also observe that our approach does not rely on the information of the asymptotics or additional assumptions to obtain the closedness.

This paper is structured as follows: we setup the linear system on an  $n$ -punctured torus, describe the pants decomposition, and briefly recap the construction of the Fredholm determinant in section 2, we compute the monodromy dependence of the Fredholm determinant in proposition 1 and obtain the closed one-form in theorem 1, highlighting the splitting described in (1.4). In section 3.1, we use the example of the torus with one puncture to illustrate the role of the one-form  $d \log \mathcal{T}$  as the generating function of the monodromy symplectomorphism in theorem 2.

**Notation 1.** Throughout this paper we use the following notation

Given an  $N$ -tuple of parameters  $(\xi_1, \dots, \xi_N)$ , and a function  $g(\xi_i), i = 1, \dots, N$  of these parameters, we define

$$g(\xi) := \text{diag}(g(\xi_1), \dots, g(\xi_N)). \tag{1.5}$$

In particular, when  $g(\xi_i) = \xi_i$ , this is

$$\xi = \text{diag}(\xi_1, \dots, \xi_N). \tag{1.6}$$

## 2. Isomonodromic deformations on the torus and tau function

In this section, we setup the  $SL(N)$  linear system on the  $n$ -point torus, introduce the pants decomposition with corresponding 3-point local solutions, and briefly describe the construction of the Fredholm determinant representation of the isomonodromic tau-function.

### 2.1. Setup

Isomonodromic deformations on a torus with  $n$  simple poles can be characterised by the following system of linear differential equations [20, 24]

$$\frac{\partial}{\partial z} \Phi(z) = \Phi(z) L_z(z), \tag{2.1}$$

$$(2\pi i) \frac{\partial}{\partial \tau} \Phi(z) = \Phi(z) L_\tau(z), \quad \frac{\partial}{\partial z_k} \Phi(z) = \Phi(z) L_k(z),$$

with  $\Phi(z) \in SL(N, \mathbb{C})$ . Here  $z$  is the coordinate on the  $n$ -point torus  $C_{1,n}$  viewed as the identification space  $z \sim z + r + \ell\tau, r, \ell \in \mathbb{N}$ , with singularities at the points  $z_k$  for  $k = 1 \dots n, \tau \in \mathbb{H}$  is the modular parameter of the torus, and  $\mathbb{H}$  is the upper half-plane. The Lax matrices  $L_z, L_\tau, L_k \in \mathfrak{sl}_N$  have elements

$$(L_z)_{ij}(z) = \delta_{ij} \left\{ P_i + \sum_{k=1}^n \frac{\theta'_1(z - z_k)}{\theta_1(z - z_k)} (A_k)_{ii} \right\} - (1 - \delta_{ij}) \sum_{k=1}^n x(Q_j - Q_i, z - z_k) (A_k)_{ij}, \tag{2.2}$$

$$(L_k)_{ij}(z) = -\delta_{ij} \frac{\theta'_1(z - z_k)}{\theta_1(z - z_k)} (A_k)_{ii} + (1 - \delta_{ij}) x(Q_j - Q_i, z - z_k) (A_k)_{ij}, \tag{2.3}$$

$$(L_\tau)_{ij}(z) = \frac{1}{2} \delta_{ij} \sum_{k=1}^n \frac{\theta_1''(z-z_k)}{\theta_1(z-z_k)} (A_k)_{ii} + \sum_{k=1}^n y(Q_j - Q_i, z-z_k) (A_k)_{ij}, \tag{2.4}$$

where  $x, y$  are the Lamé functions defined as

$$x(\xi, z) = \frac{\theta_1(z-\xi)\theta_1'(0)}{\theta_1(z)\theta_1(\xi)}, \quad y(\xi, z) = \partial_\xi x(\xi, z), \tag{2.5}$$

where  $\theta_1$  is the Jacobi theta function

$$\theta_1(z) := \sum_{n \in \mathbb{Z}} (-1)^{n-\frac{1}{2}} e^{i\pi\tau(n+\frac{1}{2})^2} e^{2\pi i(n+\frac{1}{2})z}, \tag{2.6}$$

and has the periodicity

$$\theta_1(z+1) = -\theta_1(z), \quad \theta_2(z+\tau) = -e^{-2\pi i(z+\frac{\tau}{2})} \theta_1(z).$$

As a consequence of the periodicity properties of  $\theta_1$ , the matrices  $L_z, L_k, L_\tau$  transform as follows (using notation 1) under the shift  $z \mapsto z + \tau$

$$\begin{aligned} L_z(z+\tau) &= e^{-2\pi iQ} L(z) e^{2\pi iQ}, \\ L_k(z+\tau) &= e^{-2\pi iQ} L_k(z) e^{2\pi iQ} + 2\pi i \operatorname{diag}((A_k)_{11}, \dots, (A_k)_{NN}), \\ L_\tau(z+\tau) &= e^{-2\pi iQ} (L_\tau(z) + L(z)) e^{2\pi iQ} - 2\pi iP. \end{aligned} \tag{2.7}$$

The matrices  $A_k$  are assumed to be diagonalizable

$$A_k = G_k^{-1} m_k G_k \tag{2.8}$$

and to satisfy the constraint

$$\sum_{k=1}^n (A_k)_{ii} = \sum_{k=1}^n (G_k^{-1} m_k G_k)_{ii} = 0. \tag{2.9}$$

Moreover,

$$m_i - m_j \notin \mathbb{Z}, \quad \sum_{j=1}^N P_j = \sum_{j=1}^N Q_j = 0. \tag{2.10}$$

Any solution of the linear system (2.1), under the  $z \mapsto z + \tau$  shift therefore transforms as

$$\Phi(z+\tau) = M_B \Phi(z) e^{2\pi iQ}, \tag{2.11}$$

where  $M_B \in SL(N)$  is the B-cycle monodromy, and the monodromies around the punctures  $z_k$  and the A-cycle monodromy are respectively

$$M_k = C_k e^{2\pi i m_k} C_k^{-1}, \quad M_A = S_1 e^{2\pi i a_1} S_1^{-1}, \tag{2.12}$$

with the constraint

$$M_B^{-1} M_A^{-1} M_B M_A \prod_{k=1}^n M_k = \mathbb{1}. \tag{2.13}$$

**Definition 1.** 1. The Lax matrices  $L_z(z)$  in equation (2.2) are described by the following space:

$$\mathcal{A}_{1,n} := \{ \tau, (G_k, m_k, z_k)_{k=1}^n, (P_j, Q_j)_{j=1}^N : \tau \in \mathbb{H}, z_k \in T_\tau, G_k \in SL(N), P_j, Q_j \in \mathbb{C}, (2.9), (2.10) \} / \sim, \tag{2.14}$$

where  $\sim$  is the equivalence relation  $G_k \rightarrow G_k D$ , where  $D \in SL(N)$  is diagonal<sup>7</sup>, and  $T_\tau^2$  denotes the torus with modular parameter  $\tau$  and without punctures. The dimension of this space is

$$\dim \mathcal{A}_{1,n} = n(N^2 - 1) + n(N - 1) + n + 1. \tag{2.15}$$

$\mathcal{A}_{1,n}$  can be viewed as the symplectic reduction of the moduli space of flat  $SL(N, \mathbb{C})$  connections on the  $n$ -punctured torus [1, 13, 18–21]). Resultantly, one has symplectic and Poisson structures on  $\mathcal{A}_{1,n}$  for which  $\{P_j, Q_j\} = \delta_{ij} - \frac{1}{N}$  and  $G_k$  have quadratic Poisson brackets (see proposition 2.2 in [6]), both of which can be obtained in an invariant way from the  $r$ -matrix structure on the space of  $L_z(z), L_\tau(z)$  [20]. The times  $\tau, z_k$  are Casimir elements, and all other variables can be interpreted as coordinates on the phase space of the isomonodromic system.

2. The extended character variety of  $SL(N)$  flat connections on  $T_\tau^2 \setminus \{z_1, \dots, z_n\}$  (see [6] for genus zero case) is

$$\mathcal{M}_{1,n} = \{M_A, M_B, (C_k, \mathbf{m}_k)_{k=1}^n : M_A, M_B, C_k \in SL(N), (2.12), (2.13)\} / \sim, \tag{2.16}$$

where  $/ \sim$  means that we identify monodromy representations related by an overall conjugation. The dimension of the extended character variety is

$$\dim \mathcal{M}_{1,n} = n(N^2 - 1) + n(N - 1). \tag{2.17}$$

For arbitrary genus,  $\dim \mathcal{M}_{g,n} = (N^2 - 1)(2g - 2 + n) + n(N - 1)$ . The space  $\mathcal{M}_{1,n}$  has a nondegenerate symplectic structure [1], inverting the extended Goldman Poisson bracket (see equation (1.11) in [4]).

The usual (non-extended) character variety would be

$$\mathcal{M}_{1,n}^{(0)} = \{M_A, M_B, M_1, \dots, M_n \in SL(N) | (2.13)\} / \sim, \quad \dim \mathcal{M}_{1,n}^{(0)} = n(N^2 - 1), \tag{2.18}$$

and the standard space of coefficients

$$\mathcal{A}_{1,n}^{(0)} := \{\tau, (A_k, z_k)_{k=1}^n, (P_j, Q_j)_{j=1}^N : \tau \in \mathbb{H}, z_k \in T_\tau^2, A_k \in SL(N), P_j, Q_j \in \mathbb{C}, (2.9), (2.10)\} / \sim, \tag{2.19}$$

where now  $A_k \sim D^{-1} A_k D$ , and the dimension

$$\dim \mathcal{A}_{1,n}^{(0)} = n(N^2 - 1) + n + 1. \tag{2.20}$$

It is always possible to normalize the solution so that  $S_1 = \mathbb{1}$  in the A-cycle monodromy (2.12), i.e.

$$M_A \equiv e^{2\pi i a_1}. \tag{2.21}$$

The local behaviour of the solution to the linear system in a tubular neighbourhood of the puncture  $z_k$  is

$$\Phi(z \rightarrow z_k) = C_k (z - z_k)^{m_k} \left( \mathbb{1} + \sum_{l=1}^{\infty} g_{k,l} (z - z_k)^l \right) G_k, \tag{2.22}$$

<sup>7</sup> The full gauge group acts as  $G_k \rightarrow G_k H$ , where  $H \in SL(N)$  is an arbitrary matrix. However, the choice of diagonal  $e^{2\pi i Q}$  uniquely fixes  $H$  to be diagonal.

where the matrices  $C_k, G_k$  diagonalize the monodromies (2.12) and the residue matrices (2.8) respectively. There is an ambiguity of the form

$$C_k \mapsto C_k D_k^{-1}, \quad g_{k,l} \mapsto D_k g_{k,l} D_k^{-1}, \quad G_k \mapsto D_k G_k, \tag{2.23}$$

with  $D_k$  diagonal, that does not change the asymptotics (2.22), and it amounts to a change of normalization for the eigenvectors of  $M_k, A_k$ . The extended spaces (2.16) and (2.19) differ from the non-extended ones by the inclusion of the parameters that are changed by the transformation (2.23). These parameters turn out to be canonically conjugated to  $\mathbf{m}_k$  [5].

The matrices  $g_{k,l}$  are computed recursively with the  $i, j$  component given by

$$[G_k^{-1}(g_{k,1} + [\mathbf{m}_k, g_{k,1}])G_k]_{ij} = \delta_{ij} \left\{ P_i + \sum_{k' \neq k}^n \frac{\theta_1'(z_k - z_{k'})}{\theta_1(z_k - z_{k'})} (A_{k'})_{ii} \right\} - (1 - \delta_{ij}) \sum_{k=1}^n x(Q_i - Q_j, z_k - z_{k'}) (A_{k'})_{ij}. \tag{2.24}$$

The isomonodromic time evolution<sup>8</sup> arising from the compatibility of (2.1) is generated by the  $n + 1$  Poisson commuting Hamiltonians

$$H_k := \text{Res}_{z=z_k} \frac{1}{2} \text{tr} L_z(z)^2, \quad H_\tau := \oint_A dz \frac{1}{2} \text{tr} L_z(z)^2. \tag{2.25}$$

**Definition 2.** The isomonodromic tau function  $\mathcal{T}_H$  is then defined as

$$\partial_{z_k} \log \mathcal{T}_H = H_k, \quad 2\pi i \partial_\tau \log \mathcal{T}_H = H_\tau. \tag{2.26}$$

### 2.2. Pants decomposition of the $n$ -point torus and Hilbert spaces

The  $n$ -punctured torus can be decomposed into  $n$  trinions, that we choose to be glued along copies of the A-cycle as in figure 1. Each trinion is a one-punctured cylinder with the identification  $z \sim z + 1$ , conformally equivalent to a three-punctured sphere under the map  $z \rightarrow e^{2\pi iz}$ . There is a three-point problem associated to each trinion  $\mathcal{T}^{[k]}$

$$\begin{aligned} \partial_z \Phi_{3pt}^{[k]}(z) &= \Phi_{3pt}^{[k]}(z) L_{3pt}^{[k]}(z), \\ L_{3pt}^{[k]}(z) &= -2\pi i A_-^{[k]} - 2\pi i \frac{A_0^{[k]}}{1 - e^{2\pi iz}}, \end{aligned} \tag{2.27}$$

with diagonalizable residue matrices

$$A_-^{[k]} = (G_-^{[k]})^{-1} \mathbf{a}_k G_-^{[k]}, \quad A_0^{[k]} = (G_0^{[k]})^{-1} \mathbf{m}_k G_0^{[k]}, \tag{2.28}$$

$$A_+^{[k]} = -A_-^{[k]} - A_0^{[k]} = (G_+^{[k]})^{-1} \mathbf{a}_{k+1} G_+^{[k]}, \tag{2.29}$$

for  $k = 1, \dots, n$ . The local solution on each trinion  $\Phi_{3pt}^{[k]}(z)$  is such that the ratio

$$\Phi_{3pt}^{[k]}(z - z_k)^{-1} \Phi(z)$$

is regular and single-valued around  $z = z_k$ , with  $\Phi_{3pt}^{[k]}(z - z_k)$  approximating the analytic behavior of  $\Phi(z)$  in the trinion  $\mathcal{T}^{[k]}$ .

<sup>8</sup> Here by isomonodromy we mean that the  $C_k$ 's are constant, as opposed to just the monodromies. This is the correct notion for the extended spaces  $\mathcal{A}_{1,n}$  and  $\mathcal{M}_{1,n}$ .

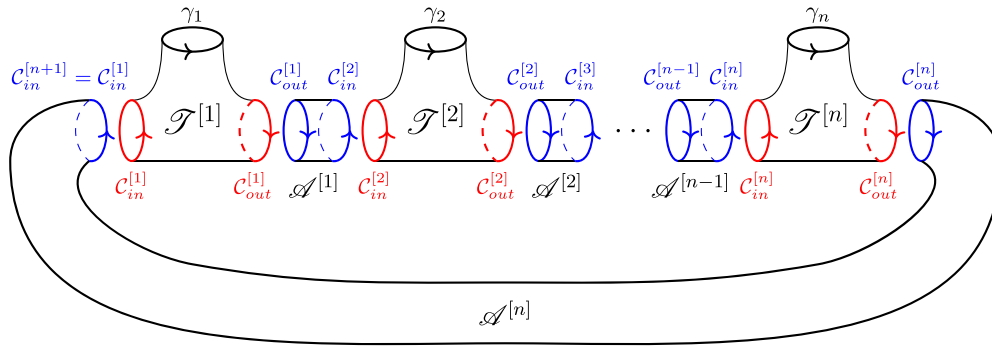


Figure 1. Pants decomposition for the  $n$ -punctured torus.

The choice of the fundamental domain is specified in the figure below.

The parameters  $\mathbf{m}_k, \mathbf{a}_k$  are local monodromy exponents, i.e the monodromies around the contours  $\gamma_k, \mathcal{C}_{in}^{[k]}, \mathcal{C}_{out}^{[k-1]}$ , are respectively

$$M_k = C_k e^{2\pi i \mathbf{m}_k} C_k^{-1}, \quad M_{\mathcal{C}_{in}^{[k]}} = S_k e^{2\pi i \mathbf{a}_k} S_k^{-1}, \quad M_{\mathcal{C}_{out}^{[k]}} = S_{k+1} e^{-2\pi i \mathbf{a}_{k+1}} S_{k+1}^{-1}, \quad (2.30)$$

for  $k = 1, \dots, n$ , where the  $C_k, S_k$  are constant matrices with  $S_k$ 's assuming the form

$$S_1 = \mathbb{1}, \quad S_{n+1} = M_B^{-1}, \quad \mathbf{a}_{n+1} = \mathbf{a}_1. \quad (2.31)$$

Note that  $\mathbf{a}_1$  corresponds to the usual  $A$ -cycle as described in (2.21). The pants decomposition induces a homomorphism of monodromy groups  $\pi_1(C_{0,n+2}) \rightarrow \pi_1(C_{1,n})$  as can be seen from the the constraint (2.13)

$$M_A \prod_{k=1}^n M_k M_B^{-1} M_A^{-1} M_B = \mathbb{1} = M_{\mathcal{C}_{in}^{[1]}} \left( \prod_{k=1}^n M_k \right) M_{\mathcal{C}_{out}^{[n]}}. \quad (2.32)$$

The local behaviour of the three-point solution  $\Phi^{[k]}$  around the point  $z_k$  is then

$$\Phi_{3pt}^{[k]}(z \rightarrow 0) = C_k z^{\mathbf{m}_k} \left( \mathbb{1} + \sum_{l=1}^{\infty} g_{1,l}^{[k]} z^l \right) G_0^{[k]}, \quad (2.33)$$

while its local behavior on the circles  $\mathcal{C}_{in}^{[k]}$  and  $\mathcal{C}_{out}^{[k]}$  is

$$\Phi_{3pt}^{[k]}|_{z \in \mathcal{C}_{in}^{[k]}} = S_k e^{2\pi i z \mathbf{a}_k} \left( \mathbb{1} + \sum_{l=1}^{\infty} g_{-,l}^{[k]} e^{-2\pi i l z} \right) G_-^{[k]}, \quad (2.34)$$

$$\Phi_{3pt}^{[k]}|_{z \in \mathcal{C}_{out}^{[k]}} = S_{k+1} e^{2\pi i z \mathbf{a}_{k+1}} \left( \mathbb{1} + \sum_{l=1}^{\infty} g_{+,l}^{[k]} e^{2\pi i l z} \right) G_+^{[k]}. \quad (2.35)$$

Once again note that  $C_k, S_k, G_0^{[k]}, G_-^{[k]}, G_+^{[k]}$  are the diagonalization matrices in (2.28) and (2.30). As before, the matrices  $g_{1,l}$  can be computed recursively with the 1, 1 matrix entry given by

$$g_{1,1}^{[k]} + [\mathbf{m}_k, g_{1,1}^{[k]}] = -2\pi i G_0^{[k]} A_0^{[k]} \left( G_0^{[k]} \right)^{-1}. \quad (2.36)$$

We now associate Hilbert spaces to each of the boundary contours  $\mathcal{C}_{in}^{[k]}, \mathcal{C}_{out}^{[k]}$  specified in figure 1. The projection operators on these spaces provide the building blocks to write the tau-function as a Fredholm determinant. The total Hilbert space  $\mathcal{H}$  is decomposed into a direct



sum of spaces  $\mathcal{H}^{[k]}$  corresponding to each pair of pants:

$$\mathcal{H} := \bigoplus_{k=1}^n \mathcal{H}^{[k]} = \mathcal{H}_+ \oplus \mathcal{H}_-, \tag{2.37}$$

where

$$\mathcal{H}_{\pm} := \bigoplus_{k=1}^n \left( \mathcal{H}_{in,\mp}^{[k]} \oplus \mathcal{H}_{out,\pm}^{[k]} \right). \tag{2.38}$$

**Definition 3.** Let

$$\mathcal{C}_{\Sigma} := \bigcup_{k=1}^n \mathcal{C}_{out}^{[k]} \cup \mathcal{C}_{in}^{[k+1]}, \quad \mathcal{C}_{in}^{[n+1]} := \mathcal{C}_{in}^{[1]}. \tag{2.39}$$

We define the single-valued functions  $\Psi(z)$  on  $\mathcal{C}_{\Sigma}$ , and  $\Psi_{3pt}^{[k]}(z)$  on  $\mathcal{C}_{in}^{[k]} \cup \mathcal{C}_{out}^{[k]}$  in terms of the solutions to the linear systems  $\Phi(z)$  and  $\Phi_{3pt}^{[k]}(z)$  in (2.1) and (2.27) as <sup>9</sup>

$$\Psi(z)|_{\mathcal{C}_{out}^{[k]}} := e^{-2\pi i(z-\delta_{k,n}\tau)\mathbf{a}_{k+1}} S_{k+1}^{-1} \Phi(z)|_{\mathcal{C}_{out}^{[k]}}, \quad \Psi(z)|_{\mathcal{C}_{in}^{[k]}} := e^{-2\pi i z \mathbf{a}_k} S_k^{-1} \Phi(z)|_{\mathcal{C}_{in}^{[k]}}, k = 1, \dots, n \tag{2.40}$$

$$\Psi_{3pt}^{[k]}(z)|_{\mathcal{C}_{out}^{[k]}} := e^{-2\pi i(z-\delta_{k,n}\tau)\mathbf{a}_{k+1}} S_{k+1}^{-1} \Phi_{3pt}^{[k]}(z-z_k)|_{\mathcal{C}_{out}^{[k]}}, \quad \Psi_{3pt}^{[k]}(z)|_{\mathcal{C}_{in}^{[k]}} := e^{-2\pi i z \mathbf{a}_k} S_k^{-1} \Phi_{3pt}^{[k]}(z-z_k)|_{\mathcal{C}_{in}^{[k]}}, \tag{2.41}$$

where  $\delta_{k,n}$  is the Krönecker delta and the identities (2.31) hold.

### 2.3. Fredholm determinant representation of the tau-function

We define the projection operators  $\mathcal{P}_{\Sigma}$ ,  $\mathcal{P}_{\oplus}$  on the Hilbert space defined in (2.37) in terms of the solutions to the  $n$ -point linear sytem (2.40), and the solutions (2.41) to the three-point problems respectively<sup>10</sup>:

- The operator  $\mathcal{P}_{\Sigma}$  is defined as

$$(\mathcal{P}_{\Sigma}f)(z) := \oint_{\mathcal{C}_{\Sigma}} \frac{dw}{2\pi i} \Psi(z) \Xi_N(z,w) \Psi(w)^{-1} f(w), \tag{2.42}$$

where  $\Xi_N$  is the (twisted) Cauchy kernel on the torus

$$\begin{aligned} \Xi_N(z,w) &= \text{diag} \left( \frac{\theta_1(z-w+\mathbf{Q}_1-\rho)\theta_1'(0)}{\theta_1(z-w)\theta_1(\mathbf{Q}_1-\rho)}, \dots, \frac{\theta_1(z-w+\mathbf{Q}_N-\rho)\theta_1'(0)}{\theta_1(z-w)\theta_1(\mathbf{Q}_N-\rho)} \right) \\ &= \frac{\theta_1(z-w+\mathbf{Q}-\rho)\theta_1'(0)}{\theta_1(z-w)\theta_1(\mathbf{Q}-\rho)}, \end{aligned} \tag{2.43}$$

<sup>9</sup> The  $z-\tau$  in  $\Psi$  is so that  $\Psi_{out,n}$  is ‘identified’ with  $\Psi_{in,1}$ , in the sense that the only difference is the twist.

<sup>10</sup> The Cauchy kernel are written in the cylindrical coordinates below, as they are more natural for our parametrization of the torus.

has the following transformation resulting from the periodicity properties of (2.6):

$$\Xi_N(z + \tau, w) = e^{2\pi i(Q-\rho)} \Xi_N(z, w), \quad \Xi_N(x, w + \tau) = \Xi_N(z, w) e^{-2\pi i(Q-\rho)}. \quad (2.44)$$

The twist along the B-cycle of the Cauchy kernel is parameterized by  $\rho$  and  $Q$ , where  $\rho$  is an auxiliary parameter entering in the definition of the Fredholm determinant (see [7, 10] for more details).

- The operator  $\mathcal{P}_\oplus^{[k]}$  is defined as

$$\left(\mathcal{P}_\oplus^{[k]} f^{[k]}\right)(z) := \int_{\mathcal{C}_in^{[k]} \cup \mathcal{C}_out^{[k]}} dw \frac{\Psi_{3pt}^{[k]}(z) \Psi_{3pt}^{[k]}(w)^{-1}}{1 - e^{-2\pi i(z-w)}} f^{[k]}(w), \quad (2.45)$$

and

$$\mathcal{P}_\oplus := \sum_{k=1}^n \mathcal{P}_\oplus^{[k]}. \quad (2.46)$$

In the paper [10] we proved that the tau function (2.26) has the following Fredholm determinant representation:

$$\mathcal{T}_H(\tau) = \det_{\mathcal{H}_+} \left[ \mathcal{P}_{\Sigma,+}^{-1} \mathcal{P}_{\oplus,+} \right] e^{i\pi\tau \text{tr} \left( a_1^2 + \frac{1}{6} \right)} e^{-i\pi N\rho} \prod_{i=0}^N \frac{\eta(\tau)}{\theta_1(Q_i - \rho)} \prod_{k=1}^n e^{-i\pi z_k (\text{tr} a_{k+1}^2 - \text{tr} a_k^2)}, \quad (2.47)$$

where  $\mathcal{P}_{\Sigma,+} := \mathcal{P}_\Sigma|_{\mathcal{H}_+}$ ,  $\mathcal{P}_{\oplus,+} := \mathcal{P}_\oplus|_{\mathcal{H}_+}$ ,  $Q_i \equiv Q_i(\tau, z_1, \dots, z_n)$  are the dynamical variables of the  $SL(N)$  linear system (2.2),  $a_k$  are the monodromy exponents defined in (2.30),  $\rho$  is the auxiliary parameter, and  $\eta(\tau)$  is the Dedekind eta function. The tau function  $\mathcal{T}_H$  is independent of  $\rho$ , so that the  $\rho$ -dependence of the determinant can be read directly from (2.47) (see the discussion around equation (4.13) in [7] and remark 2 in [10] for more details). Furthermore, the time derivative of the Fredholm determinant recovers the JMU one form:

$$\omega_{JMU} := \left( d_\tau + \sum_{k=1}^n d_{z_k} \right) \log \mathcal{T}_H = \frac{1}{2\pi i} H_\tau d\tau + \sum_{k=1}^n H_k dz_k. \quad (2.48)$$

We will do this by explicitly computing the derivative of the tau function (2.47) with respect to the monodromy data.

### 3. Monodromy dependence of the torus tau function

We begin with the following identity for the derivative of the Fredholm determinant (see proofs of theorem 2.9 in [12] and theorem 1 in [10])

$$d \log \det_{\mathcal{H}_+} \left[ \mathcal{P}_{\Sigma,+}^{-1} \mathcal{P}_{\oplus,+} \right] = -\text{tr}_{\mathcal{H}} \mathcal{P}_\oplus d\mathcal{P}_\Sigma, \quad d = d_{\mathcal{M}} + d_\tau + \sum_{k=1}^n d_{z_k}, \quad d_\bullet = d \bullet \partial_\bullet, \quad (3.1)$$

where  $d_{\mathcal{M}}$  is the total exterior derivative on the extended character variety  $\mathcal{M}_{1,n}$  and does not involve differentiation in  $\rho$ .

**Proposition 1.** *The derivative of the Fredholm determinant w.r.t the monodromy data is*

$$\begin{aligned}
 d_{\mathcal{M}} \log \det_{\mathcal{H}_+} \left[ \mathcal{P}_{\Sigma,+}^{-1} \mathcal{P}_{\oplus,+} \right] &= \text{tr} (\mathbf{P} d_{\mathcal{M}} \mathbf{Q}) + d_{\mathcal{M}} \log \left( \prod_{i=1}^N \theta_1(\mathbf{Q}_i - \rho) \right) + \sum_{k=1}^n \text{tr} \mathbf{m}_k d_{\mathcal{M}} G_k G_k^{-1} \\
 &+ \sum_{k=1}^n \left( \text{tr} \mathbf{a}_k d_{\mathcal{M}} G_-^{[k]} \left( G_-^{[k]} \right)^{-1} - \text{tr} \mathbf{m}_k d_{\mathcal{M}} G_0^{[k]} \left( G_0^{[k]} \right)^{-1} \right. \\
 &\left. - \text{tr} \mathbf{a}_{k+1} d_{\mathcal{M}} G_+^{[k]} \left( G_+^{[k]} \right)^{-1} \right) \\
 &- i\pi \text{tr} \tau d_{\mathcal{M}} \mathbf{a}_1^2 + \sum_{k=1}^n i\pi \text{tr} z_k d_{\mathcal{M}} \left( \mathbf{a}_{k+1}^2 - \mathbf{a}_k^2 \right), \tag{3.2}
 \end{aligned}$$

where (with the notation 1)  $\mathbf{m}_k, \mathbf{a}_k$  are the local monodromy exponents (2.30),  $\mathbf{P}, \mathbf{Q}$  are the dynamical variables in the Lax matrix (2.2),  $\rho$  is an arbitrary parameter,  $G_k, G_{\pm}^{[k]}$  are the eigenvector matrices (2.8) and (2.28).

**Proof.** We start from the following equality (see equation (3.61) in [10])

$$\begin{aligned}
 -\text{tr}_{\mathcal{H}} [\mathcal{P}_{\oplus} d_{\mathcal{M}} \mathcal{P}_{\Sigma}] &= - \sum_{k=1}^n \oint_{\mathcal{C}_{in}^{[k]} \cup \mathcal{C}_{out}^{[k]}} dw \oint_{\mathcal{C}_{in}^{[k]} \cup \mathcal{C}_{out}^{[k]}} \frac{dz}{2\pi i} \frac{1}{1 - e^{-2\pi i(z-w)}} \text{tr} \left\{ \Psi_{3pt}^{[k]}(z) \Psi_{3pt}^{[k]}(w)^{-1} \right. \\
 &\left. \times d_{\mathcal{M}} \left( \Psi(w) \Xi_N(w, z) \Psi(z)^{-1} \right) \right\} \\
 &= - \sum_{k=1}^n \oint_{\mathcal{C}_{in}^{[k]} \cup \mathcal{C}_{out}^{[k]}} \frac{dz}{2\pi i} \text{tr} \left\{ d_{\mathcal{M}} \Psi(z) \Psi(z)^{-1} \left( \partial_z \Psi_{3pt}^{[k]}(z) \left( \Psi_{3pt}^{[k]}(z) \right)^{-1} \right) \right\} \\
 &+ \sum_{k=1}^n \oint_{\mathcal{C}_{in}^{[k]} \cup \mathcal{C}_{out}^{[k]}} \frac{dz}{2\pi i} \text{tr} \left\{ d_{\mathcal{M}} \Psi(z) \Psi(z)^{-1} \left( \partial_z \Psi(z) \Psi(z)^{-1} \right) \right\} \\
 &+ \sum_{k=1}^n \oint_{\mathcal{C}_{in}^{[k]} \cup \mathcal{C}_{out}^{[k]}} \frac{dz}{2\pi i} \text{tr} \left\{ \left[ \frac{\theta_1'(\mathbf{Q} - \rho)}{\theta_1(\mathbf{Q} - \rho)} - i\pi \mathbb{1}_N \right] \Psi(z)^{-1} d_{\mathcal{M}} \Psi(z) \right\} \\
 &=: I_1 + I_2 + I_3. \tag{3.3}
 \end{aligned}$$

We now compute each of the above integrals separately.

• **Computing the integral  $I_2$ :**

We begin by noting that the boundary circles in the pants decomposition (see figure 1) can be identified in the following way

$$\mathcal{C}_{out}^{[k]} = -\mathcal{C}_{in}^{[k+1]} \quad \text{for} \quad l = 1, \dots, n - 1. \tag{3.4}$$

With the above identification of contours, the integral  $I_2$  in the expression (3.3) simplifies as

$$\begin{aligned}
 I_2 &= \sum_{k=1}^n \oint_{C_{in}^{[k]} \cup C_{out}^{[k]}} \frac{dz}{2\pi i} \text{tr} \{ d_{\mathcal{M}} \Psi(z) \Psi(z)^{-1} \partial_z \Psi(z) \Psi(z)^{-1} \} \\
 &= \sum_{k=1}^n \oint_{C_{in}^{[k]}} \frac{dz}{2\pi i} \text{tr} \{ d_{\mathcal{M}} \Psi(z) \Psi(z)^{-1} \partial_z \Psi(z) \Psi(z)^{-1} \} \\
 &\quad + \sum_{k=1}^n \oint_{C_{out}^{[k]}} \frac{dz}{2\pi i} \text{tr} \{ d_{\mathcal{M}} \Psi(z) \Psi(z)^{-1} \partial_z \Psi(z) \Psi(z)^{-1} \} \\
 &= \oint_{C_{in}^{[1]} \cup C_{out}^{[n]}} \frac{dz}{2\pi i} \text{tr} \{ d_{\mathcal{M}} \Psi(z) \Psi(z)^{-1} \partial_z \Psi(z) \Psi(z)^{-1} \}.
 \end{aligned} \tag{3.5}$$

In order to express the above expression in terms of the solution to the linear problem on the torus  $\Phi$ , we use the identities coming from (2.40) and (2.41) and fix  $z_1 = 0$  without loss of generality:

$$\Psi(z)|_{C_{in}^{[1]}} = e^{-2\pi i z a_1} \Phi(z)|_{C_{in}^{[1]}}, \quad \Psi(z)|_{C_{out}^{[n]}} = e^{-2\pi i (z-\tau) a_1} M_B \Phi(z)|_{C_{out}^{[n]}}, \tag{3.6}$$

where the contours (see figure 2):

$$C_{in}^{[1]} = \left[ \frac{1-\tau}{2}, -\frac{(1+\tau)}{2} \right], \quad C_{out}^{[n]} = \left[ \frac{1+\tau}{2}, -\frac{(1-\tau)}{2} \right]. \tag{3.7}$$

Therefore the solution  $\Phi$  restricted to the outermost circles  $C_{in}^{[1]}, C_{out}^{[n]}$  satisfies the relation:

$$\Phi(z)|_{C_{out}^{[n]}} = \Phi(z+\tau)|_{C_{in}^{[1]}} \stackrel{(2.11)}{=} M_B^{-1} \Phi(z)|_{C_{in}^{[1]}} e^{2\pi i Q}. \tag{3.8}$$

Substituting (3.6) and using the identity (3.8), the expression (3.5) for the integral  $I_2$  simplifies as follows:

$$\begin{aligned}
 I_2 &\stackrel{(3.6)}{=} \oint_{C_{in}^{[1]}} \frac{dz}{2\pi i} \text{tr} \{ (-2\pi i z d_{\mathcal{M}} a_1 + d_{\mathcal{M}} \Phi(z) \Phi(z)^{-1}) (\partial_z \Phi(z) \Phi(z)^{-1} - 2\pi i a_1) \} \\
 &\quad + \oint_{C_{out}^{[n]}} \frac{dz}{2\pi i} \text{tr} \{ (-2\pi i (z-\tau) M_B^{-1} d_{\mathcal{M}} a_1 M_B + M_B^{-1} d_{\mathcal{M}} M_B + d_{\mathcal{M}} \Phi(z) \Phi(z)^{-1}) \\
 &\quad \times (\partial_z \Phi(z) \Phi(z)^{-1} - 2\pi i M_B^{-1} a_1 M_B) \} \\
 &\stackrel{(3.8)}{=} \oint_{C_{in}^{[1]}} \frac{dz}{2\pi i} \text{tr} \{ (-2\pi i z d_{\mathcal{M}} a_1 + d_{\mathcal{M}} \Phi(z) \Phi(z)^{-1}) (\partial_z \Phi(z) \Phi(z)^{-1} - 2\pi i a_1) \} \\
 &\quad - \int_{C_{in}^{[1]}} \frac{dz}{2\pi i} \text{tr} \{ (-2\pi i z d_{\mathcal{M}} a_1 + d_{\mathcal{M}} \Phi(z) \Phi(z)^{-1} + 2\pi i \Phi(z) d_{\mathcal{M}} Q \Phi(z)^{-1}) \\
 &\quad \times (\partial_z \Phi(z) \Phi(z)^{-1} - 2\pi i a_1) \} \\
 &= - \oint_{C_{in}^{[1]}} dz \text{tr} \{ d_{\mathcal{M}} Q (\Phi(z)^{-1} \partial_z \Phi(z) - 2\pi i \Phi(z)^{-1} a_1 \Phi(z)) \} \\
 &\stackrel{(2.2)}{=} \text{tr} (P d_{\mathcal{M}} Q) - 2\pi i \oint_{C_{in}^{[1]}} dz \text{tr} \{ d_{\mathcal{M}} Q \Phi(z)^{-1} a_1 \Phi(z) \}.
 \end{aligned} \tag{3.9}$$

To obtain the last line, we used the constraint (2.9), together with the following property of  $\theta_1(z)$

$$\theta_1(z+1) = -\theta_1(z) \quad \Rightarrow \quad \oint_{\mathcal{C}_{in}^{[1]}} dz \partial_z \log \theta_1(z) = i\pi \tag{3.10}$$

to simplify the contribution from the Lax matrix  $L_z(z)$ . In summary,

$$I_2 = \text{tr} (\mathbf{P} d_{\mathcal{M}} \mathbf{Q}) + 2\pi i \oint_{\mathcal{C}_{in}^{[1]}} dz \text{tr} \{ d_{\mathcal{M}} \mathbf{Q} \Phi(z)^{-1} \mathbf{a}_1 \Phi(z) \}. \tag{3.11}$$

- **Computing the integral  $I_3$ :** Using the identification of neighbouring contours (3.4), the integral  $I_3$  in (3.3) simplifies as

$$\begin{aligned} I_3 &= \sum_{k=1}^n \oint_{\mathcal{C}_{in}^{[k]} \cup \mathcal{C}_{out}^{[k]}} \frac{dz}{2\pi i} \text{tr} \left\{ \left[ \frac{\theta_1'(\mathbf{Q} - \rho)}{\theta_1(\mathbf{Q} - \rho)} - i\pi \mathbb{1}_N \right] \Psi(z)^{-1} d_{\mathcal{M}} \Psi(z) \right\} \\ &\stackrel{(3.4)}{=} \oint_{\mathcal{C}_{in}^{[1]} \cup \mathcal{C}_{out}^{[n]}} \frac{dz}{2\pi i} \text{tr} \left\{ \left[ \frac{\theta_1'(\mathbf{Q} - \rho)}{\theta_1(\mathbf{Q} - \rho)} - i\pi \mathbb{1}_N \right] \Psi(z)^{-1} d_{\mathcal{M}} \Psi(z) \right\} \\ &\stackrel{(3.6), (3.8)}{=} - \oint_{\mathcal{C}_{in}^{[1]}} dz \text{tr} \left\{ \left[ \frac{\theta_1'(\mathbf{Q} - \rho)}{\theta_1(\mathbf{Q} - \rho)} - i\pi \mathbb{1}_N \right] d_{\mathcal{M}} \mathbf{Q} \right\} = \text{tr} \left( \frac{\theta_1'(\mathbf{Q} - \rho)}{\theta_1(\mathbf{Q} - \rho)} d_{\mathcal{M}} \mathbf{Q} \right) \\ &= d_{\mathcal{M}} \log \left( \prod_{i=1}^N \theta_1(Q_i - \rho) \right). \end{aligned} \tag{3.12}$$

The last line is obtained by remembering that  $\mathbf{Q} \in SL(N)$  and is therefore traceless.

- **Computing the integral  $I_1$ :**

Let us start by expressing the integral  $I_1$  (3.3) in terms of the solutions to the linear problems using (2.40) and (2.41):

$$\begin{aligned} I_1 &= - \sum_{k=1}^n \oint_{\mathcal{C}_{in}^{[k]} \cup \mathcal{C}_{out}^{[k]}} \frac{dz}{2\pi i} \text{tr} \left\{ d_{\mathcal{M}} \Psi(z) \Psi(z)^{-1} \partial_z \Psi_{3pt}^{[k]}(z) \Psi_{3pt}^{[k]}(z)^{-1} \right\} \\ &\stackrel{(2.40), (2.41)}{=} - \oint_{\mathcal{C}_{in}^{[k]}} \frac{dz}{2\pi i} \text{tr} \left\{ (-2\pi i z S_k d_{\mathcal{M}} \mathbf{a}_k S_k^{-1} - d_{\mathcal{M}} S_k S_k^{-1} + d_{\mathcal{M}} \Phi(z) \Phi(z)^{-1}) \right. \\ &\quad \times \left. \left( \partial_z \Phi_{3pt}^{[k]}(z - z_k) \Phi_{3pt}^{[k]}(z - z_k)^{-1} - 2\pi i S_k \mathbf{a}_k S_k^{-1} \right) \right\} \\ &\quad - \oint_{\mathcal{C}_{out}^{[k]}} \frac{dz}{2\pi i} \text{tr} \left\{ (-2\pi i (z - \delta_{k,n} \tau) S_{k+1} d_{\mathcal{M}} \mathbf{a}_{k+1} S_{k+1}^{-1} - d_{\mathcal{M}} S_{k+1} S_{k+1}^{-1} + d_{\mathcal{M}} \Phi(z) \Phi(z)^{-1}) \right. \\ &\quad \times \left. \left( \partial_z \Phi_{3pt}^{[k]}(z - z_k) \Phi_{3pt}^{[k]}(z - z_k)^{-1} - 2\pi i S_{k+1} \mathbf{a}_{k+1} S_{k+1}^{-1} \right) \right\} \\ &=: \sum_{k=1}^n \left( I_{in}^{[k]} + I_{out}^{[k]} \right) \stackrel{(2.31), (3.4)}{=} \oint_{\mathcal{C}_{in}^{[1]}} dz \text{tr} \left\{ (-2\pi i z d_{\mathcal{M}} \mathbf{a}_1 + d_{\mathcal{M}} \Phi(z) \Phi(z)^{-1}) \mathbf{a}_1 \right\} \end{aligned} \tag{3.13}$$

$$+ \oint_{\mathcal{C}_{out}^{[n]}} dz \text{tr} \left\{ (-2\pi i (z - \tau) d_{\mathcal{M}} \mathbf{a}_k + d_{\mathcal{M}} M_B M_B^{-1} + M_B d_{\mathcal{M}} \Phi(z) \Phi(z)^{-1} M_B^{-1}) \mathbf{a}_1 \right\} \tag{3.14}$$

$$= \sum_{k=1}^n \left( I_{in}^{[k]} + I_{out}^{[k]} \right) - 2\pi i \oint_{C_{in}^{[1]}} dz \operatorname{tr} \left\{ \mathbf{d}_{\mathcal{M}} \mathbf{Q} \Phi(z)^{-1} \mathbf{a}_1 \Phi(z) \right\}, \tag{3.15}$$

where we defined

$$I_{in}^{[k]} := - \oint_{C_{in}^{[k]}} \frac{dz}{2\pi i} \operatorname{tr} \left\{ \left( -2\pi i z S_k \mathbf{d}_{\mathcal{M}} \mathbf{a}_k S_k^{-1} - \mathbf{d}_{\mathcal{M}} S_k S_k^{-1} + \mathbf{d}_{\mathcal{M}} \Phi(z) \Phi(z)^{-1} \right) \right. \\ \left. \times \partial_z \Phi_{3pt}^{[k]}(z - z_k) \Phi_{3pt}^{[k]}(z - z_k)^{-1} \right\} \tag{3.16}$$

$$I_{out}^{[k]} := - \oint_{C_{out}^{[k]}} \frac{dz}{2\pi i} \operatorname{tr} \left\{ \left( -2\pi i (z - \delta_{k,n} \tau) S_{k+1} \mathbf{d}_{\mathcal{M}} \mathbf{a}_{k+1} S_{k+1}^{-1} - \mathbf{d}_{\mathcal{M}} S_{k+1} S_{k+1}^{-1} + \mathbf{d}_{\mathcal{M}} \Phi(z) \Phi(z)^{-1} \right) \right. \\ \left. \times \partial_z \Phi_{3pt}^{[k]}(z - z_k) \Phi_{3pt}^{[k]}(z - z_k)^{-1} \right\}. \tag{3.17}$$

Note that the functions

$$\left( -2\pi i z S_k \mathbf{d}_{\mathcal{M}} \mathbf{a}_k S_k^{-1} - \mathbf{d}_{\mathcal{M}} S_k S_k^{-1} + \mathbf{d}_{\mathcal{M}} \Phi(z) \Phi(z)^{-1} \right), \\ \left( -2\pi i (z - \delta_{k,n} \tau) S_{k+1} \mathbf{d}_{\mathcal{M}} \mathbf{a}_{k+1} S_{k+1}^{-1} - \mathbf{d}_{\mathcal{M}} S_{k+1} S_{k+1}^{-1} + \mathbf{d}_{\mathcal{M}} \Phi(z) \Phi(z)^{-1} \right), \tag{3.18}$$

in the integrands above are single-valued on  $C_{in}^{[k]}$  and  $C_{out}^{[k]}$  respectively, but they have logarithmic branch cuts as can be seen from the local solutions (2.22), (2.33)–(2.35), that make it impossible to close the integration contour.

So, we introduce the following trick: we add and subtract the integrals  $\tilde{I}_{in}^{[k]}, \tilde{I}_{out}^{[k]}$ , defined to be analogous to  $I_{in}^{[k]}, I_{out}^{[k]}$  with the solution of the torus linear system  $\Phi(z)$  in (3.16) and (3.17) replaced by the solution of the 3-pt linear system  $\Phi_{3pt}^{[k]}$ , namely

$$\tilde{I}_{in}^{[k]} := - \oint_{C_{in}^{[k]}} \frac{dz}{2\pi i} \operatorname{tr} \left\{ \left( -2\pi i z S_k \mathbf{d}_{\mathcal{M}} \mathbf{a}_k S_k^{-1} - \mathbf{d}_{\mathcal{M}} S_k S_k^{-1} + \mathbf{d}_{\mathcal{M}} \Phi_{3pt}^{[k]}(z - z_k) \Phi_{3pt}^{[k]}(z - z_k)^{-1} \right) \right. \\ \left. \times \partial_z \Phi_{3pt}^{[k]}(z - z_k) \Phi_{3pt}^{[k]}(z - z_k)^{-1} \right\}, \tag{3.19}$$

$$\tilde{I}_{out}^{[k]} := - \oint_{C_{out}^{[k]}} \frac{dz}{2\pi i} \operatorname{tr} \left\{ \left( -2\pi i (z - \delta_{k,n} \tau) S_{k+1} \mathbf{d}_{\mathcal{M}} \mathbf{a}_{k+1} S_{k+1}^{-1} - \mathbf{d}_{\mathcal{M}} S_{k+1} S_{k+1}^{-1} \right. \right. \\ \left. \left. + \mathbf{d}_{\mathcal{M}} \Phi_{3pt}^{[k]}(z - z_k) \Phi_{3pt}^{[k]}(z - z_k)^{-1} \right) \times \partial_z \Phi_{3pt}^{[k]}(z - z_k) \Phi_{3pt}^{[k]}(z - z_k)^{-1} \right\}. \tag{3.20}$$

We now compute the differences

$$I_{in}^{[k]} - \tilde{I}_{in}^{[k]} = - \oint_{C_{in}^{[k]}} \frac{dz}{2\pi i} \operatorname{tr} \left\{ \left( \mathbf{d}_{\mathcal{M}} \Phi(z) \Phi(z)^{-1} - \mathbf{d}_{\mathcal{M}} \Phi_{3pt}^{[k]}(z - z_k) \Phi_{3pt}^{[k]}(z - z_k)^{-1} \right) \right. \\ \left. \times \partial_z \Phi_{3pt}^{[k]}(z - z_k) \Phi_{3pt}^{[k]}(z - z_k)^{-1} \right\}, \tag{3.21}$$

$$I_{out}^{[k]} - \tilde{I}_{out}^{[k]} = - \oint_{C_{out}^{[k]}} \frac{dz}{2\pi i} \operatorname{tr} \left\{ \left( \mathbf{d}_{\mathcal{M}} \Phi(z) \Phi(z)^{-1} - \mathbf{d}_{\mathcal{M}} \Phi_{3pt}^{[k]}(z - z_k) \Phi_{3pt}^{[k]}(z - z_k)^{-1} \right) \right. \\ \left. \times \partial_z \Phi_{3pt}^{[k]}(z - z_k) \Phi_{3pt}^{[k]}(z - z_k)^{-1} \right\}, \tag{3.22}$$

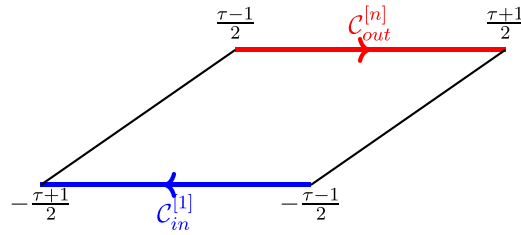


Figure 2. The fundamental domain of the torus.

and sum the above expressions to obtain the following expression

$$\begin{aligned}
 & I_{in}^{[k]} - \tilde{I}_{in}^{[k]} + I_{out}^{[k]} - \tilde{I}_{out}^{[k]} \\
 &= - \oint_{C_{in}^{[k]} \cup C_{out}^{[k]}} \frac{dz}{2\pi i} \text{tr} \left\{ \left( d_{\mathcal{M}} \Phi(z) \Phi(z)^{-1} - d_{\mathcal{M}} \Phi_{3pt}^{[k]}(z - z_k) \Phi_{3pt}^{[k]}(z - z_k)^{-1} \right) \right. \\
 &\quad \left. \times \partial_z \Phi_{3pt}^{[k]}(z - z_k) \Phi_{3pt}^{[k]}(z - z_k)^{-1} \right\} \\
 &= \text{Res}_{z=z_k} \text{tr} \left\{ \left( d_{\mathcal{M}} \Phi(z) \Phi(z)^{-1} - d_{\mathcal{M}} \Phi_{3pt}^{[k]}(z) \Phi_{3pt}^{[k]}(z - z_k)^{-1} \right) \partial_z \Phi_{3pt}^{[k]}(z) \Phi_{3pt}^{[k]}(z - z_k)^{-1} \right\}.
 \end{aligned} \tag{3.23}$$

Note the orientation of the contours of integration (see figure 2) when taking the residue. Substituting the local behaviour near  $z = z_k$  of the functions  $\Phi$ ,  $\Phi_{3pt}^{[k]}$  described in (2.22) and (2.33) respectively, we compute the individual terms in the residue:

$$\begin{aligned}
 d_{\mathcal{M}} \Phi \Phi^{-1} &= d_{\mathcal{M}} C_k C_k^{-1} + \log(z - z_k) C_k d_{\mathcal{M}} \mathbf{m}_k C_k^{-1} \\
 &\quad + C_k (z - z_k)^{m_k} d_{\mathcal{M}} G_k G_k^{-1} (z - z_k)^{-m_k} C_k^{-1} + \mathcal{O}((z - z_k)),
 \end{aligned} \tag{3.24}$$

$$\begin{aligned}
 d_{\mathcal{M}} \Phi_{3pt}^{[k]} (\Phi_{3pt}^{[k]})^{-1} &= d_{\mathcal{M}} C_k C_k^{-1} + \log(z - z_k) C_k d_{\mathcal{M}} \mathbf{m}_k C_k^{-1} \\
 &\quad + C_k (z - z_k)^{m_k} d_{\mathcal{M}} G_0^{[k]} \left( G_0^{[k]} \right)^{-1} (z - z_k)^{m_k} C_k^{-1} + \mathcal{O}((z - z_k)),
 \end{aligned} \tag{3.25}$$

$$\partial_z \Phi_{3pt}^{[k]} \left( \Phi_{3pt}^{[k]} \right)^{-1} = \frac{C_k \mathbf{m}_k C_k^{-1}}{z - z_k} + \mathcal{O}(1). \tag{3.26}$$

Substituting (3.24)–(3.26) in (3.23)

$$\begin{aligned}
 & I_{in}^{[k]} - \tilde{I}_{in}^{[k]} + I_{out}^{[k]} - \tilde{I}_{out}^{[k]} \\
 &= \text{Res}_{z=z_k} \text{tr} \left\{ \left( d_{\mathcal{M}} \Phi(z) \Phi(z)^{-1} - d_{\mathcal{M}} \Phi_{3pt}^{[k]}(z) \Phi_{3pt}^{[k]}(z)^{-1} \right) \partial_z \Phi_{3pt}^{[k]}(z) \Phi_{3pt}^{[k]}(z)^{-1} \right\} \\
 &= \text{tr} \mathbf{m}_k d_{\mathcal{M}} G_k G_k^{-1} - \text{tr} \mathbf{m}_k d_{\mathcal{M}} G_0^{[k]} \left( G_0^{[k]} \right)^{-1}.
 \end{aligned} \tag{3.27}$$

The last step to compute the integral  $I_1$  comes from noting that the integrals  $\tilde{I}_{in,out}^{[l]}$  themselves can be evaluated explicitly using the local behavior (2.34) and (2.35) of the 3-point solution

at their ‘local’  $\pm i\infty$

$$\begin{aligned} \tilde{I}_{in}^{[k]} = & - \oint_{\mathcal{C}_{in}^{[k]}} \frac{dz}{2\pi i} \text{tr} \left\{ \left( -2\pi iz S_k d_{\mathcal{M}} \mathbf{a}_k S_k^{-1} - d_{\mathcal{M}} S_k S_k^{-1} + d_{\mathcal{M}} \Phi_{3pt}^{[k]}(z - z_k) \Phi_{3pt}^{[k]}(z - z_k)^{-1} \right) \right. \\ & \left. \times \partial_z \Phi_{3pt}^{[k]}(z - z_k) \Phi_{3pt}^{[k]}(z - z_k)^{-1} \right\}. \end{aligned} \tag{3.28}$$

We begin by computing the following expressions

$$\begin{aligned} d_{\mathcal{M}} \Phi_{3pt}^{[k]}(z - z_k) \Phi_{3pt}^{[k]}(z - z_k)^{-1} \Big|_{z \rightarrow -i\infty} \stackrel{(2.34)}{=} & d_{\mathcal{M}} S_k S_k^{-1} + 2\pi i (z - z_k) S_k d_{\mathcal{M}} \mathbf{a}_k S_k^{-1} \\ & + S_k e^{2\pi i (z - z_k) \mathbf{a}_k} d_{\mathcal{M}} G_-^{[k]} \left( G_-^{[k]} \right)^{-1} e^{-2\pi i (z - z_k) \mathbf{a}_k} S_k^{-1}, \end{aligned} \tag{3.29}$$

and similarly, the  $z$ -derivative term

$$\partial_z \Phi_{3pt}^{[k]}(z - z_k) \Phi_{3pt}^{[k]}(z - z_k)^{-1} \Big|_{z \rightarrow -i\infty} = 2\pi i S_k \mathbf{a}_k S_k^{-1}. \tag{3.30}$$

Substituting (3.29) and (3.30) in the integrand of (3.28),

$$\begin{aligned} \lim_{z \rightarrow -i\infty} \text{tr} \left\{ \left( -2\pi iz S_k d_{\mathcal{M}} \mathbf{a}_k S_k^{-1} - d_{\mathcal{M}} S_k S_k^{-1} + d_{\mathcal{M}} \Phi_{3pt}^{[k]}(z - z_k) \Phi_{3pt}^{[k]}(z - z_k)^{-1} \right) \right. \\ \left. \times \partial_z \Phi_{3pt}^{[k]}(z - z_k) \Phi_{3pt}^{[k]}(z - z_k)^{-1} \right\} \\ = \text{tr} \left\{ \left( -z_k 2\pi i S_k d_{\mathcal{M}} \mathbf{a}_k S_k^{-1} + S_k e^{2\pi i (z - z_k) \mathbf{a}_k} d_{\mathcal{M}} G_-^{[k]} \left( G_-^{[k]} \right)^{-1} e^{-2\pi i (z - z_k) \mathbf{a}_k} S_k^{-1} \right) \right. \\ \left. \times 2\pi i S_k \mathbf{a}_k S_k^{-1} \right\} \\ = (2\pi i) \text{tr} \left( -2\pi i z_k \mathbf{a}_k d_{\mathcal{M}} \mathbf{a}_k + \mathbf{a}_k d_{\mathcal{M}} G_-^{[k]} \left( G_-^{[k]} \right)^{-1} \right). \end{aligned} \tag{3.31}$$

Substituting (3.29), (3.30) and (3.31) in (3.28) we get

$$\begin{aligned} \tilde{I}_{in}^{[k]} = & - \oint_{\mathcal{C}_{in}^{[k]}} \frac{dz}{2\pi i} (2\pi i) \text{tr} \left( -2\pi i z_k \mathbf{a}_k d_{\mathcal{M}} \mathbf{a}_k + \mathbf{a}_k d_{\mathcal{M}} G_-^{[k]} \left( G_-^{[k]} \right)^{-1} \right) \\ = & \text{tr} \left( -2\pi i z_k \mathbf{a}_k d_{\mathcal{M}} \mathbf{a}_k + \mathbf{a}_k d_{\mathcal{M}} G_-^{[k]} \left( G_-^{[k]} \right)^{-1} \right). \end{aligned} \tag{3.32}$$

The term  $\tilde{I}_{out}^{[k]}$  is computed in a similar fashion

$$\begin{aligned} \tilde{I}_{out}^{[k]} := & - \oint_{\mathcal{C}_{out}^{[k]}} \frac{dz}{2\pi i} \text{tr} \left\{ \left( -2\pi i (z - \delta_{k,n} \tau) S_{k+1} d_{\mathcal{M}} \mathbf{a}_{k+1} S_{k+1}^{-1} - d_{\mathcal{M}} S_{k+1} S_{k+1}^{-1} \right. \right. \\ & \left. \left. + d_{\mathcal{M}} \Phi_{3pt}^{[k]}(z - z_k) \Phi_{3pt}^{[k]}(z - z_k)^{-1} \right) \times \partial_z \Phi_{3pt}^{[k]}(z - z_k) \Phi_{3pt}^{[k]}(z - z_k)^{-1} \right\}. \end{aligned} \tag{3.33}$$



Similar to the above computation, start by computing the individual 3-pt derivative terms

$$\begin{aligned} d_{\mathcal{M}}\Phi_{3pt}^{[k]}(z)\Phi_{3pt}^{[k]}(z)^{-1}|_{z\rightarrow+i\infty} &\stackrel{(2.35)}{=} d_{\mathcal{M}}S_{k+1}S_{k+1}^{-1} + 2\pi i S_{k+1}(z-z_k)d_{\mathcal{M}}\mathbf{a}_{k+1}S_{k+1}^{-1} \\ &\quad + S_{k+1}e^{2\pi i(z-z_k)\mathbf{a}_{k+1}}d_{\mathcal{M}}G_+^{[k]}(G_+^{[k]})^{-1}e^{-2\pi i(z-z_k)\mathbf{a}_{k+1}}S_{k+1}^{-1}, \end{aligned} \tag{3.34}$$

and the  $z$  derivative

$$\partial_z\Phi_{3pt}^{[k]}(z)\Phi_{3pt}^{[k]}(z)^{-1}|_{z\rightarrow+i\infty} = 2\pi i S_{k+1}\mathbf{a}_{k+1}S_{k+1}^{-1}. \tag{3.35}$$

substituting (3.34) and (3.35) in the integrand of (3.33),

$$\begin{aligned} \lim_{z\rightarrow+i\infty} \text{tr} \left\{ \left( -2\pi i(z-\delta_{k,n}\tau)S_{k+1}d_{\mathcal{M}}\mathbf{a}_{k+1}S_{k+1}^{-1} - d_{\mathcal{M}}S_{k+1}S_{k+1}^{-1} \right. \right. \\ \left. \left. + d_{\mathcal{M}}\Phi_{3pt}^{[k]}(z-z_k)\Phi_{3pt}^{[k]}(z-z_k)^{-1} \right) \times \partial_z\Phi_{3pt}^{[k]}(z-z_k)\Phi_{3pt}^{[k]}(z-z_k)^{-1} \right\} \\ = \text{tr} \left\{ \left( 2\pi i\delta_{k,n}\tau S_{k+1}d_{\mathcal{M}}\mathbf{a}_{k+1}S_{k+1}^{-1} - 2\pi i S_{k+1}z_k d_{\mathcal{M}}\mathbf{a}_{k+1}S_{k+1}^{-1} \right. \right. \\ \left. \left. + S_{k+1}e^{2\pi i(z-z_k)\mathbf{a}_{k+1}}d_{\mathcal{M}}G_+^{[k]}(G_+^{[k]})^{-1}e^{-2\pi i(z-z_k)\mathbf{a}_{k+1}}S_{k+1}^{-1} \right) 2\pi i S_{k+1}\mathbf{a}_{k+1}S_{k+1}^{-1} \right\} \\ = (2\pi i)\text{tr} \left( 2\pi i\tau d_{\mathcal{M}}\mathbf{a}_1\mathbf{a}_1 - z_k d_{\mathcal{M}}\mathbf{a}_{k+1}\mathbf{a}_{k+1} + \mathbf{a}_{k+1}d_{\mathcal{M}}G_+^{[k]}(G_+^{[k]})^{-1} \right). \end{aligned} \tag{3.36}$$

In the last line we used that  $\mathbf{a}_{n+1} = \mathbf{a}_1$ . Now the term

$$\begin{aligned} \tilde{I}_{out}^{[k]} &:= -\oint_{C_{out}^{[k]}} \frac{dz}{2\pi i} \text{tr} \left\{ \left( -2\pi i(z-\delta_{k,n}\tau)S_{k+1}d_{\mathcal{M}}\mathbf{a}_{k+1}S_{k+1}^{-1} - d_{\mathcal{M}}S_{k+1}S_{k+1}^{-1} \right. \right. \\ &\quad \left. \left. + d_{\mathcal{M}}\Phi_{3pt}^{[k]}(z-z_k)\Phi_{3pt}^{[k]}(z-z_k)^{-1} \right) \times \partial_z\Phi_{3pt}^{[k]}(z-z_k)\Phi_{3pt}^{[k]}(z-z_k)^{-1} \right\} \\ &= -\oint_{C_{out}^{[k]}} \frac{dz}{2\pi i} (2\pi i)\text{tr} \left( 2\pi i\tau d_{\mathcal{M}}\mathbf{a}_1\mathbf{a}_1 - z_k d_{\mathcal{M}}\mathbf{a}_{k+1}\mathbf{a}_{k+1} + \mathbf{a}_{k+1}d_{\mathcal{M}}G_+^{[k]}(G_+^{[k]})^{-1} \right) \\ &= \text{tr} \left( -2\pi i\tau d_{\mathcal{M}}\mathbf{a}_1\mathbf{a}_1 + z_k d_{\mathcal{M}}\mathbf{a}_{k+1}\mathbf{a}_{k+1} - \mathbf{a}_{k+1}d_{\mathcal{M}}G_+^{[k]}(G_+^{[k]})^{-1} \right) \end{aligned} \tag{3.37}$$

Gathering the expressions (3.27), (3.32) and (3.37), the integral  $I_1$  is

$$\begin{aligned} I_1 &= \sum_{k=1}^n \left( \text{tr} \mathbf{m}_k d_{\mathcal{M}}G_k G_k^{-1} - \text{tr} \mathbf{m}_k d_{\mathcal{M}}G_0^{[k]}(G_0^{[k]})^{-1} + \text{tr} \mathbf{a}_k d_{\mathcal{M}}G_-^{[k]}(G_-^{[k]})^{-1} \right. \\ &\quad \left. - \text{tr} \mathbf{a}_{k+1} d_{\mathcal{M}}G_+^{[k]}(G_+^{[k]})^{-1} \right) \\ &\quad - i\pi \text{tr} \tau d_{\mathcal{M}}\mathbf{a}_1^2 + \sum_{k=1}^n i\pi \text{tr} z_k d_{\mathcal{M}}(\mathbf{a}_{k+1}^2 - \mathbf{a}_k^2) - 2\pi i \oint_{C_{in}^{[1]}} dz \text{tr} \{ d_{\mathcal{M}}\mathbf{Q}\Phi(z)^{-1}\mathbf{a}_1\Phi(z) \}. \end{aligned} \tag{3.38}$$

Substituting the expressions (3.11), (3.12) and (3.38) in (3.3), we get the expression (3.2) for the derivative of the Fredholm determinant w.r.t the monodromy data.  $\square$

Having computed the derivative of the Fredholm determinant, we are ready to turn to the isomonodromic tau function (2.47).

**Theorem 1.** *The full parametric dependence of the tau function  $\mathcal{T}_H$  is*

$$d \log \mathcal{T}_H = \omega - \omega_{3pt}, \tag{3.39}$$

where

$$\omega_{3pt} := - \sum_{k=1}^n \left( \text{tr } \mathbf{a}_k d_{\mathcal{M}} G_-^{[k]} \left( G_-^{[k]} \right)^{-1} - \text{tr } \mathbf{m}_k d_{\mathcal{M}} G_0^{[k]} \left( G_0^{[k]} \right)^{-1} - \text{tr } \mathbf{a}_{k+1} d_{\mathcal{M}} G_+^{[k]} \left( G_+^{[k]} \right)^{-1} \right), \tag{3.40}$$

$$\omega = \sum_{j=1}^N P_j d_{\mathcal{M}} Q_j + \sum_{k=1}^n \text{tr } \mathbf{m}_k d_{\mathcal{M}} G_k G_k^{-1} + \sum_{k=1}^n H_k dz_k + \frac{1}{2\pi i} H_{\tau} d\tau, \tag{3.41}$$

$P_i, Q_i$  are the dynamical variables in (2.2),  $m_k, a_k$  constitute the monodromy data (see figure 1),  $\tau$  is the modular parameter,  $H_k, H_{\tau}$  are the Hamiltonians (2.25), the matrices  $G_k$  diagonalise the linear system on the  $n$ -point torus (2.8), and the matrices  $G_{\pm}, G_0$  diagonalise the 3-point linear system (2.28).

**Proof.** To compute the full parametric dependence of the isomonodromic tau function  $\mathcal{T}_H$ , we need to differentiate the prefactor in equation (2.47):

$$\begin{aligned} & d_{\mathcal{M}} \log \left( e^{-i\pi N\rho} \prod_{i=0}^N \frac{\eta(\tau)}{\theta_1(Q_i - \rho)} \prod_{k=1}^n e^{-i\pi z_k (\text{tr } \mathbf{a}_{k+1}^2 - \text{tr } \mathbf{a}_k^2)} e^{i\pi \tau \text{tr} \left( \mathbf{a}_1^2 + \frac{1}{\delta} \right)} \right) \\ &= - \sum_{i=1}^N d_{\mathcal{M}} Q_i \frac{\theta_1'(Q_i - \rho)}{\theta_1(Q_i - \rho)} - i\pi \sum_{k=1}^n z_k \text{tr} (d_{\mathcal{M}} \mathbf{a}_{k+1}^2 - d_{\mathcal{M}} \mathbf{a}_k^2) + i\pi \tau d_{\mathcal{M}} \text{tr } \mathbf{a}_1^2. \end{aligned} \tag{3.42}$$

(3.39) then follows from (2.48) and proposition 1.  $\square$

**Remark 1.** Note that  $d \log \mathcal{T}_H$  is automatically a closed 1-form on the space  $\mathbb{T}_{1,n} \times \mathcal{M}$ , because  $\mathcal{T}_H$  defined by equation (2.47) is a (locally) well-defined function of monodromies and times, so its partial derivatives commute.

The following nontrivial statement follows from theorem 1.

**Corollary 1.** *The exterior derivative of the one-form  $\omega$  in (3.41) is a (time-independent) two-form on  $T^* \mathcal{M}_{1,n}$ , i.e.*

$$d\omega(\partial_t, \partial_{\mu_i}) = d\omega(\partial_t, \partial_{t'}) = 0, \quad \partial_t d\omega|_{\{\mu_j\} \text{ fixed}} = 0, \tag{3.43}$$

for every monodromy coordinate  $\mu_i$  and time-coordinate  $t, t'$ .

**Proof.** Since  $\omega_{3pt}$  is a time-independent one-form on  $T^* \mathcal{M}_{1,n}$ ,  $d\omega_{3pt} = d_{\mathcal{M}} \omega_{3pt}$  is a time-independent two-form on  $T^* \mathcal{M}$ . On the other hand, from  $d^2 \log \mathcal{T}_H = 0$  we have

$$d\omega = d\omega_{3pt}. \tag{3.44}$$

$\square$

### 3.1. The closed one-form as the generating function of the Riemann-Hilbert map

The closed one-form  $d \log \mathcal{T}_H$  has an elegant geometric interpretation as the generating function of the extended monodromy map

$$\mathcal{A}_{1,n} \rightarrow \mathcal{M}_{1,n}. \tag{3.45}$$

Let us consider for illustration purposes the case of the once-punctured torus with the singularity at  $z = 0$ , with the Lax pair

$$\begin{aligned} L_z^{(CM)} &:= \begin{pmatrix} P(\tau) & mx(-2Q(\tau), z) \\ mx(2Q(\tau), z) & -P(\tau) \end{pmatrix}, \\ L_\tau^{(CM)} &:= -m \begin{pmatrix} 0 & y(-2Q, z) \\ y(2Q, z) & 0 \end{pmatrix}, \end{aligned} \tag{3.46}$$

where  $y(\xi, z) := \partial_\xi x(\xi, z)$ . The consistency condition of the above Lax matrices gives the non-autonomous elliptic Calogero-Moser equation

$$2\pi i \frac{dP}{d\tau} = m^2 \wp'(2Q|\tau), \quad 2\pi i \frac{dQ}{d\tau} = P, \tag{3.47}$$

and its Hamiltonian takes the form

$$H_{CM} := \oint_A \frac{dz}{2} \text{tr} \left( L_z^{(CM)}(z) \right)^2 = P^2 - m^2 \wp(2Q|\tau) - 2m^2 \eta_1(\tau), \tag{3.48}$$

where  $\eta_1(\tau) = -\frac{1}{6} \frac{\theta_1'''}{\theta_1'}$ . The corresponding monodromy representation is

$$\begin{aligned} M_A &= e^{2\pi i a \sigma_3}, M_0 = C_0 e^{2\pi i m \sigma_3} C_0^{-1}, \\ M_B &= \frac{1}{\sin 2\pi a} \begin{pmatrix} e^{-\frac{i\nu}{2}} \sin(\pi(2a-m)) & e^{\frac{i\nu}{2}} \sin(\pi m) \\ -e^{-\frac{i\nu}{2}} \sin(\pi m) & e^{\frac{i\nu}{2}} \sin(\pi(2a+m)) \end{pmatrix}. \end{aligned} \tag{3.49}$$

The spaces  $\mathcal{A}_{1,1}$  and  $\mathcal{M}_{1,1}$  are parameterized by  $m, P, Q, g, \tau$  and  $m, a, \nu, c$  respectively, where  $g$  is introduced below, and  $c$  parametrizes the freedom of sending  $C_0 \mapsto C_0 e^{c\sigma_3}$  in (3.49) without changing  $M_0$ . The variables  $a, \nu$  are Darboux coordinates for the Goldman bracket (see appendix A), while the variables  $P, Q$  are Darboux coordinates on  $\mathcal{A}_{1,1}^{(0)}$ . The residue of the Lax matrix

$$\text{Res}_{z=0} L_z^{(CM)} = -m\sigma_1 = G^{-1} m \sigma_3 G, \tag{3.50}$$

where

$$G := e^{\frac{1}{2} g \sigma_3} G_0, G_0 := \begin{pmatrix} 1 & -1 \\ 1 & 1 \end{pmatrix}. \tag{3.51}$$

The equation (3.39) in the one-punctured case takes the simple form

$$d \log \mathcal{T}_{CM} := \omega - \omega_{3pt}, \omega = 2P d_{\mathcal{M}} Q + \frac{1}{2\pi i} H_{CM} d\tau + m d_{\mathcal{M}} g, \omega_{3pt} = iad\nu + mdf, \tag{3.52}$$

where  $f$  is a function only of the extended monodromy data that can be obtained by using the explicit  $G$ -matrices for the three-point problem from [14], and whose specific form will not be needed in the following.

**Theorem 2.** *The derivative of the 1-form  $\omega$  in (3.52) can be written as a closed two-form on  $\mathcal{A}_{1,1}$ , extending the standard symplectic form<sup>11</sup>  $dP \wedge dQ$  by including variations of the Casimir  $m$  and time  $\tau$ :*

<sup>11</sup> Note that  $d\omega$  is not quite a symplectic form. To make it symplectic one first needs to take into account that we work with extended monodromy space, so there is conjugate variable for  $m$ , we call it  $c$ . It can also be interpreted as initial

$$d\omega = 2dP \wedge dQ - dH_{CM} \wedge \frac{d\tau}{2\pi i} + dm \wedge dg. \tag{3.53}$$

**Proof.** Let us start by computing the total exterior derivative of  $\omega$ . Using the notation  $\dot{f} := \partial_\tau f$ ,

$$\begin{aligned} d\omega &= d\left(2Pd_{\mathcal{M}}Q + H_\tau \frac{d\tau}{2\pi i} + md_{\mathcal{M}}g\right) \\ &= 2d_{\mathcal{M}}P \wedge d_{\mathcal{M}}Q + 2\dot{P}d\tau \wedge d_{\mathcal{M}}Q + 2Pd\tau \wedge d_{\mathcal{M}}\dot{Q} + \left(\frac{\partial H_{CM}}{\partial Q}d_{\mathcal{M}}Q \right. \\ &\quad \left. + \frac{\partial H_{CM}}{\partial P}d_{\mathcal{M}}P - 2m(\wp(2Q|\tau) + 2\eta_1)dm\right) \wedge \frac{d\tau}{2\pi i} + dm \wedge d_{\mathcal{M}}g + md\tau \wedge d_{\mathcal{M}}\dot{g} \\ &= 2d_{\mathcal{M}}P \wedge d_{\mathcal{M}}Q + \left(\frac{\partial H_{CM}}{\partial Q} - 4\pi i\dot{P}\right)d_{\mathcal{M}}Q \wedge \frac{d\tau}{2\pi i} + \left(\frac{\partial H_{CM}}{\partial P} - 4\pi i\dot{Q}\right)d_{\mathcal{M}}P \wedge \frac{d\tau}{2\pi i} \\ &\quad + dm \wedge d_{\mathcal{M}}g + md\tau \wedge d_{\mathcal{M}}\dot{g} - 2m(\wp(2Q|\tau) + 2\eta_1)dm \wedge \frac{d\tau}{2\pi i} \\ &= 2d_{\mathcal{M}}P \wedge d_{\mathcal{M}}Q + dm \wedge d_{\mathcal{M}}g - 4m^2\wp'(2Q|\tau)d_{\mathcal{M}}Q \wedge d\tau \\ &\quad + md\tau \wedge d_{\mathcal{M}}\dot{g} - 2m(\wp(2Q|\tau) + 2\eta_1)dm \wedge \frac{d\tau}{2\pi i}, \end{aligned} \tag{3.54}$$

where in the last line we used the Hamiltonian equations  $2\pi i\dot{Q} = P$ ,  $2\pi i\dot{P} = m^2\wp'(2Q)$ . To go further, we need to compute  $\dot{g}$ . Consider the local behaviour at zero of the Lax equation  $2\pi i\partial_\tau\Phi = \Phi L_\tau^{(CM)}$ . The LHS and RHS behave respectively as

$$2\pi i\partial_\tau\Phi \sim C_z^{m\sigma_3}\partial_\tau G, \quad \Phi L_\tau^{(CM)} \sim C_z^{m\sigma_3}G \lim_{z \rightarrow 0} L_\tau^{(CM)}(z, \tau), \tag{3.55}$$

implying that

$$2\pi iG^{-1}\partial_\tau G = i\pi G_0^{-1}\partial_\tau g\sigma_3 G_0 = \lim_{z \rightarrow 0} L_\tau^{(CM)}(z, \tau) = m(\wp(2Q|\tau) + 2\eta_1)\sigma_1, \tag{3.56}$$

i.e.

$$2\pi i\dot{g} = -2m(\wp(2Q|\tau) + 2\eta_1). \tag{3.57}$$

Plugging this in the expression for  $d\omega$ , we find

$$\begin{aligned} d\omega &= 2d_{\mathcal{M}}P \wedge d_{\mathcal{M}}Q + dm \wedge d_{\mathcal{M}}g - 4m^2\wp'(2Q|\tau)d_{\mathcal{M}}Q \wedge d\tau \\ &\quad + m\frac{d\tau}{2\pi i} \wedge d_{\mathcal{M}}(2m\wp(2Q|\tau) + 4m\eta_1) + 2m(\wp(2Q|\tau) + 2\eta_1)dm \wedge \frac{d\tau}{2\pi i} \\ &= 2d_{\mathcal{M}}P \wedge d_{\mathcal{M}}Q + dm \wedge d_{\mathcal{M}}g. \end{aligned} \tag{3.58}$$

This makes it clear that  $d\omega$  has no  $d\tau$ -component, as implied by corollary 1<sup>12</sup>. We now rewrite  $d\omega$  as a 2-form on  $\mathcal{A}_{1,1}$ :

condition for the equation (3.57) and contributes as  $dm \wedge dc$ . Then we may either add formal dual variable for  $\tau$ ,  $h$  and consider extended Hamiltonian  $\mathcal{H} = H - 2\pi ih$  in order to describe non-autonomous system as autonomous one by adding equation  $\dot{\tau} = 1$ , or just restrict to extended monodromy manifold only.

<sup>12</sup> One can also explicitly check its time-independence:

$$\begin{aligned} 2\pi i\partial_\tau d\omega &= 2d_{\mathcal{M}}\dot{P} \wedge d_{\mathcal{M}}Q + 2d_{\mathcal{M}}P \wedge d_{\mathcal{M}}\dot{Q} + dm \wedge d_{\mathcal{M}}\dot{g} \\ &= 2d_{\mathcal{M}}(m^2\wp'(2Q|\tau)) \wedge d_{\mathcal{M}}Q + 2d_{\mathcal{M}}P \wedge d_{\mathcal{M}}P - dm \wedge d_{\mathcal{M}}(2m\wp(2Q|\tau) + 4m\eta_1) = 0. \end{aligned} \tag{3.59}$$

$$\begin{aligned}
 2d_{\mathcal{M}}P \wedge d_{\mathcal{M}}Q &= 2dP \wedge dQ - 2\dot{P}d\tau \wedge d_{\mathcal{M}}Q + 2\dot{Q}d\tau \wedge d_{\mathcal{M}}P \\
 &= 2dP \wedge dQ + \frac{d\tau}{2\pi i} \wedge (-2m^2\wp'(2Q|\tau)d_{\mathcal{M}}Q + 2Pd_{\mathcal{M}}P) \quad (3.60) \\
 &= 2dP \wedge dQ - dH_{CM} \wedge \frac{d\tau}{2\pi i} - d_tg \wedge dm,
 \end{aligned}$$

leading to

$$\begin{aligned}
 d\omega &= 2dP \wedge dQ - dH_{CM} \wedge \frac{d\tau}{2\pi i} - d_tg \wedge dm + dm \wedge d_{\mathcal{M}}g \\
 &= 2dP \wedge dQ + dm \wedge dg - dH_{CM} \wedge \frac{d\tau}{2\pi i}. \quad (3.61)
 \end{aligned}$$

□

**Corollary 2.** *The tau function  $\mathcal{T}_{CM}$  is the generating function for the extended monodromy map (3.45) on the one-punctured torus, i.e. it is the difference of symplectic potentials on  $\mathcal{A}_{1,1}$  and  $\mathcal{M}_{1,1}$  respectively.*

**Proof.** This follows from the equation  $d \log \mathcal{T}_{CM} = \omega - \omega_{3pt}$  together with the following two facts:

1. Theorem 2, stating that  $\omega$  is a symplectic potential on  $\mathcal{A}_{1,1}$ .
2.  $\omega_{3pt}$  is a symplectic potential for the extended Goldman’s symplectic form [1]: its exterior derivative is a closed 2-form on the character variety such that its restriction on the symplectic leaves yields the Goldman symplectic form:

$$d\omega_{3pt}|_{dm=0} = ida \wedge d\nu \stackrel{(A.8)}{=} \frac{i}{2\pi} \Omega_G. \quad (3.62)$$

□

This statement is readily generalized to the  $SL(N)$  case with arbitrary number of punctures by using the explicit one-forms and (3.41) and (3.40). Among its consequences is the extension of the point of view of [5], identifying the isomonodromic tau function with the generating function of the extended monodromy map, to the case of  $SL(N)$  Fuchsian systems on elliptic curves. Indeed, the existing results for Fuchsian systems on the Riemann sphere can be derived directly from the Fredholm determinant representation of the tau function, in much the same way as we did in the genus one case, see appendix B.

#### 4. Concluding remarks

The genus zero analogue of our one-form  $d \log \mathcal{T}_H$  computed in theorem 1 was used in [14] to compute the connection constant for the Painlevé VI and II equation, which is the proportionality constant between tau functions in different asymptotic regimes. In the case of Painlevé VI, it corresponds to the transformation  $t \mapsto (1 - t)$ , which belongs to the modular group of the four-punctured sphere. In the case of the torus, there is a new type of connection constant corresponding to an S-duality transformation  $\tau \mapsto -1/\tau \in SL(2, \mathbb{Z})$ , the modular group of the torus. The problem of computing such constants has been traditionally an outstanding problem in the theory of Painlevé equations, and we defer the explicit computation of the modular connection constant to our upcoming paper. Such connection constants can be viewed as originating from a change in monodromy coordinates induced by a change in the pants decomposition

(for example, viewing the torus as a pair of pants glued along the A- or B-cycle, in the case of  $\tau \mapsto -1/\tau$ ).

The higher genus generalization of the Lax matrix (2.2) is a twisted meromorphic differential on a punctured Riemann surface of genus  $g$  [9, 20, 21], with periodicity properties along the A- and B-cycles given by twist matrices  $T_{A_j}, T_{B_j} \in SL(N, \mathbb{C})$ :

$$L_z(\gamma_{A_j} z) = T_{A_j}^{-1} L_z(z) T_{A_j}, \quad L_z(\gamma_{B_j} z) = T_{B_j}^{-1} L_z(z) T_{B_j}, \quad \prod_{j=1}^g T_{A_j} T_{B_j} T_{A_j}^{-1} T_{B_j}^{-1} = \mathbb{1}_N. \quad (4.1)$$

As usual,  $L_z(z)$  will have  $n$  simple poles, with residues (2.8). The twist matrices encode the canonical variables of the isomonodromic system, and different types of twists will correspond to different flat bundles on  $C_{g,n}$ .

The structure (3.39) of the closed 1-form  $\omega - \omega_0$  has a rather straightforward generalization, leading to natural expectations on what should happen in the case of a punctured Riemann surface of genus  $g \geq 2$ . The expectation is that a tau function in that case should satisfy

$$d \log \mathcal{T}_H^{(g,n)} = \sum_{a=1}^{(N^2-1)(g-1)} P_a d_{\mathcal{M}} Q_a + \sum_{j=1}^{3g-3+n} H_j dt_j + \sum_{k=1}^n \text{tr} \mathbf{m}_k d_{\mathcal{M}} G_k G_k^{-1} - \omega_{3pt}. \quad (4.2)$$

Here we denoted by  $P_a, Q_a$  an appropriate set of Darboux coordinates encoded in the twists, and the  $t_j$ 's are local coordinates on the Teichmüller space  $\mathbb{T}_{g,n}$ .  $\omega_0$  is as before a time-independent one-form depending on the pants decomposition.

While the extension (4.2) seems very natural, its derivation would require first the generalization to higher genus Riemann surfaces of the Fredholm determinant construction of [10], which we leave to future work.

### Data availability statement

No new data were created or analysed in this study.

### Acknowledgments

We especially thank Oleg Lisovyy, for the suggestion of computing the one-form  $d \log \mathcal{T}$  by using the Fredholm determinant, and H D thanks Andrei Prokhorov for numerous discussions. Final stages of the draft were completed during F D M and H D's residence at the Isaac Newton Institute during the Fall 2022 semester and they thank the Møller institute and organizers of the program 'Applicable resurgent asymptotics: towards a universal theory' for hospitality during the final stages of the draft, supported by EPSRC Grant No. EP/R014604/1. H D acknowledges the support of Australian Research Council Discovery Project #DP200100210, and her INI visit is supported by the Simons foundation. Part of this work was done during H D's residence at the Mathematical Sciences Research Institute in Berkeley, California, during the Fall 2021 semester supported by the National Science Foundation Grant No. DMS-1928930. P G would like to thank Max Planck Institute for Mathematics in Bonn, where a part of this work was done, for the hospitality during the complicated times, and Geneva university for hosting him now. This publication was partially produced within the scope of the NCCR SwissMAP which was funded by the Swiss National Science Foundation (Grant Number 205607). P G would

like to thank the Swiss National Science Foundation for their financial support. P G would also like to thank the defenders of Ukraine, who are saving his Motherland.

### Appendix A. Character variety for the one-punctured torus

The character variety of the  $SL(2)$  one-punctured torus is the cubic surface

$$\mathcal{M}_{1,1}^{(0)} := \{M_A, M_B \in SL(2) : \text{tr}(M_A^{-1}M_B^{-1}M_A M_B) = M_0\} / \sim. \quad (\text{A.1})$$

The trace coordinates

$$p_A := \text{tr} M_A, \quad p_B := \text{tr} M_B, \quad p_{AB} := \text{tr} M_A M_B, \quad p_0 := \text{tr} M_0 \quad (\text{A.2})$$

satisfy the relation

$$\begin{aligned} p_0 &= \text{tr}(M_A^{-1}M_B^{-1}M_A M_B) = \text{tr}(M_A M_B M_A^{-1})\text{tr}(M_B) - \text{tr}(M_A M_B M_A^{-1}M_B) \\ &= (\text{tr} M_B)^2 - \text{tr}(M_A M_B)\text{tr}(M_A M_B^{-1}) + \text{tr}(M_A^2) \\ &= (\text{tr} M_B)^2 - \text{tr}(M_A M_B) [\text{tr}(M_A)\text{tr}(M_B) - \text{tr}(M_A M_B)] \\ &\quad + \text{tr}(M_A)^2 - 2 \\ &= p_A^2 + p_B^2 + p_{AB}^2 - p_A p_B p_{AB} - 2, \end{aligned} \quad (\text{A.3})$$

so that the space of monodromy data is described by the cubic surface

$$\mathcal{W}_{1,1} = p_A^2 + p_B^2 + p_{AB}^2 - p_A p_B p_{AB} - p_0 - 2 = 0 \quad (\text{A.4})$$

known as Fricke cubic [11]. We used the following identities to obtain (A.3):

$$\text{tr}(xy) + \text{tr}(xy^{-1}) = \text{tr} x \text{tr} y, \quad \text{tr}(x^2) = (\text{tr} x)^2 - 2, \quad \text{tr}(x^{-1}) = \text{tr}(x). \quad (\text{A.5})$$

#### A.1. Darboux coordinates

The functions  $p_A, p_B, p_{AB}$  satisfy the Goldman bracket:

$$\{p_A, p_B\} = p_{AB} - \frac{1}{2} p_A p_B. \quad (\text{A.6})$$

We now introduce Darboux coordinates for the space  $\mathcal{M}_{1,1}^{(0)}$ . One possible choice is the one presented in [23], that involves hyperbolic functions and square-roots. A more convenient choice, involving only trigonometric functions, is explicit in the parametrization (3.49). In terms of  $a, \nu, m$ , we have

$$\begin{aligned} p_A &= 2 \cos 2\pi a, \\ p_B &= \frac{\sin(\pi(2a - m))}{\sin 2\pi a} e^{-i\nu/2} + \frac{\sin(\pi(2a + m))}{\sin 2\pi a} e^{i\nu/2}, \\ p_{AB} &= \frac{\sin(\pi(2a - m))}{\sin 2\pi a} e^{i(2\pi a - \nu/2)} + \frac{\sin(\pi(2a + m))}{\sin 2\pi a} e^{-i(2\pi a - \nu/2)}, \\ p_0 &= 2 \cos 2\pi m. \end{aligned} \quad (\text{A.7})$$

From the relations (A.7), we see that  $a, \nu$  are Darboux coordinates for the Goldman bracket (A.6), and the Goldman's symplectic form is

$$\Omega_G = 2\pi da \wedge d\nu. \quad (\text{A.8})$$

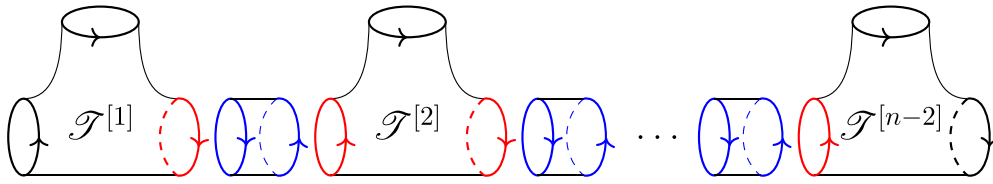


Figure 3. Pants decomposition for the  $n$ -punctured sphere.

### Appendix B. Tau function for the $n$ -punctured sphere

The construction of section 3 applies (in a much simpler context) also to the case of an isomonodromic problem on the Riemann sphere with  $n$  Fuchsian singularities. The tau function in this case was written as a Fredholm determinant in [8, 12]:

$$\mathcal{T}_H^{(g=0)} = \det_{\mathcal{H}_+} \left[ \mathcal{P}_{\Sigma,+}^{-1} \mathcal{P}_{\oplus,+} \right] \prod_{k=1}^{n-2} z_k^{\frac{1}{2} \text{tr} (a_k^2 - a_{k-1}^2 - m_k^2)}, \quad (\text{B.1})$$

where  $\mathcal{P}_{\Sigma,+}$  and  $\mathcal{P}_{\oplus,+}$  are here defined from the  $SL(N)$  Fuchsian linear system on a sphere and the corresponding pants decomposition as in figure 3 (see [12] for details).

The computation of the monodromy derivative of (B.1) is a simplified version of the proof of theorem 1: the result is

$$d \log \mathcal{T}_H^{(g=0)} = \sum_{k=1}^n \text{tr} \mathbf{m}_k d_{\mathcal{M}} G_k G_k^{-1} + \sum_{k=1}^n H_k dz_k - \sum_{k=1}^n \Theta_k^{(3pt)} \quad (\text{B.2})$$

$$= \sum_{k=1}^n \text{tr} \mathbf{m}_k d G_k G_k^{-1} - \sum_{k=1}^n H_k dz_k - \sum_{k=1}^n \Theta_k^{(3pt)}, \quad (\text{B.3})$$

where  $H_k$  are the Schlesinger Hamiltonians, and

$$\Theta_k^{3pt} := - \left( \text{tr} \mathbf{a}_k d_{\mathcal{M}} G_-^{[k]} \left( G_-^{[k]} \right)^{-1} - \text{tr} \mathbf{m}_k d_{\mathcal{M}} G_0^{[k]} \left( G_0^{[k]} \right)^{-1} - \text{tr} \mathbf{a}_{k+1} d_{\mathcal{M}} G_+^{[k]} \left( G_+^{[k]} \right)^{-1} \right) \quad (\text{B.4})$$

are the one-forms coming from the pants decomposition, like in the case of the torus. In particular, this shows that the Fredholm determinant tau function of [8, 12] is indeed the fully normalized tau function of [14], and thus coincides with the generating function of the monodromy map for the  $n$ -punctured sphere with Fuchsian singularities, as in [5].

### ORCID iD

Fabrizio Del Monte  <https://orcid.org/0000-0003-3367-8873>

### References

- [1] Alekseev A and Malkin A 1995 Symplectic structure of the moduli space of flat connection on a Riemann surface *Commun. Math. Phys.* **169** 99
- [2] Bertola M 2021 Correction to: the dependence on the monodromy data of the isomonodromic tau function *Commun. Math. Phys.* **381** 1445
- [3] Bertola M 2010 The dependence on the monodromy data of the isomonodromic tau function *Commun. Math. Phys.* **294** 539
- [4] Bertola M and Korotkin D (2021) Extended goldman symplectic structure in Fock-Goncharov coordinates (arXiv:1910.06744v11)



- [5] Bertola M and Korotkin D 2021 Tau-functions and monodromy symplectomorphisms *Commun. Math. Phys.* **388** 245
- [6] Bertola M and Korotkin D 2022 On the tau function of the hypergeometric equation *Physica D* **439** 133381
- [7] Bonelli G, Del Monte F, Gavrylenko P and Tanzini A 2020  $\mathcal{N} = 2^*$  Gauge theory, free fermions on the torus and Painlevé VI *Commun. Math. Phys.* **377** 1381
- [8] Cafasso M, Gavrylenko P and Lisovyy O 2019 Tau functions as widom constants *Commun. Math. Phys.* **365** 741
- [9] Del Monte F 2020 Supersymmetric Field Theories and Isomonodromic Deformations *PhD Thesis* SISSA Trieste
- [10] Del Monte F, Desiraju H and Gavrylenko P 2023 Isomonodromic tau functions on a torus as fredholm determinants and charged partitions *Commun. Math. Phys.* **398** 1029–84
- [11] Fricke R and Klein F (1897, 1912) *Vorlesungen über die Theorie der Automorphen Funktionen, vol. I and II* (Leipzig: BG Teubner)
- [12] Gavrylenko P and Lisovyy O 2018 Fredholm determinant and nekrasov sum representations of isomonodromic tau functions *Commun. Math. Phys.* **363** 1
- [13] Hitchin N 1997 Frobenius manifolds *Gauge Theory and Symplectic Geometry* (Berlin: Springer) pp 69–112
- [14] Its A, Lisovyy O and Prokhorov A 2018 Monodromy dependence and connection formulae for isomonodromic tau functions *Duke Math. J.* **167** 1347
- [15] Its A R and Prokhorov A 2018 On some Hamiltonian properties of the isomonodromic tau functions *Rev. Math. Phys.* **30** 1840008
- [16] Its A and Prokhorov A 2016 Connection problem for the tau-function of the Sine-Gordon reduction of Painlevé-III equation via the Riemann-Hilbert approach *Int. Math. Res. Not.* **2016** 6856
- [17] Jimbo M, Miwa T and Ueno K 1981 Monodromy preserving deformation of linear ordinary differential equations with rational coefficients: I. general theory and  $\tau$ -function *Physica D* **2** 306
- [18] Korotkin D A and Samtleben J A H 1997 On the quantization of isomonodromic deformations on the torus *Int. J. Mod. Phys.* **A12** 2013
- [19] Krichever I Isomonodromy equations on algebraic curves, canonical transformations and whitham equations (arXiv:[hep-th/0112096](https://arxiv.org/abs/hep-th/0112096))
- [20] Levin A, Olshanetsky M and Zotov A 2014 Classification of isomonodromy problems on elliptic curves *Russ. Math. Surveys* **69** 35
- [21] Levin A and Olshanetsky M 1999 Hierarchies of isomonodromic deformations and hitchin systems *Moscow Seminar in Mathematical Physics (American Mathematical Society Translations: Series 2 vol 191)* (Providence, RI: American Mathematical Society) pp 223–62
- [22] Lisovyy O and Roussillon J 2017 On the connection problem for Painlevé I *J. Phys. A* **50** 255202
- [23] Nekrasov N, Rosly A and Shatashvili S 2011 Darboux coordinates, Yang-Yang functional and gauge theory *Nucl. Phys. B* **216** 69
- [24] Takasaki K 2003 Spectral curve and Hamiltonian structure of isomonodromic SU(2) Calogero-Gaudin system *J. Math. Phys.* **44** 3979